

FontSuvidha 6.0

Devnagari Font Converter

**Revolutionary Software breaking the barriers of Transformation of
Devnagari Fonts from One Font Format to Another.**

User Manual

CyberShoppee.com

Chanakya, 3rd Floor, Gokhale Road, Naupada,

Thane 400602, Maharashtra, India

Tel No: 91-22-25421185 / 91-22-25339003

E-mail: support@cybershoppee.com

Web: www.cybershoppee.com / www.fontsuvidha.com

Table of Contents

- [About FontSuvudha Project](#)
- [Technical Specifications](#)
- [Who can use FontSuvudha?](#)
- [Fonts and Font Families](#)
- [Installation](#)
- [How to Use This Package](#)
 - [Converter For MS-Word](#)
 - [MS-Word Document Converter](#)
 - [MS-Word Direct Converter](#)
 - [Clipboard Converter](#)
 - [HTML, Text File Converter](#)
 - [Access \(.mdb\), FoxPro, Dbase \(.DBF\) File Converter](#)
 - [Converter For MS-Excel](#)
 - [MS-Excel Converter](#)
 - [MS-Excel Direct Converter](#)
- [Test Files](#)
- [Non-compatibility issues and their effect on conversion](#)
- [Development Team](#)
- [Font Families Included in FontSuvudha](#)
- [Contact Us](#)

About FontSuvudha Project

We are living in the Information Technology age. For a multi-lingual, Multi-Cultural country like India, computing solutions in Indian Languages was a must. A number of software packages in Indian Languages are now available. Indian Language computing has been popular since years now.

People using Indian Language Software have always faced a few problems such as non-standardisation of keyboards and font encoding. The non-compatibility of text amongst different Indian Language fonts has posed an acute problem for those using Indian Languages for Computing. Fonts for English text can be very easily changed in packages like MS Word etc, just by selecting a particular text block. However such facility is not available for Indian Languages. Taking the example of Devnagari alone, at this moment there are more than 20 popular Devnagari font formats and 5 different keyboard layouts. A document composed with any of these fonts can not be read in MS Word or even in any other application, if the specific font is not available, leave alone editing that document. This is true with all such available fonts and formats. There always was a strong need to overcome this practical problem.

The people behind **IL Infotech Pvt Ltd** have always been in the forefront in promoting Indian Language applications on & off the Internet for many years now. A project was undertaken to overcome the said limitation and allow easy transformation of documents from one font format to another.

FontSuvudha emerged as a single point solution that addresses this acute need of conversion of documents from one format to another. It is now possible to just select a particular text and change the font from any of those available with you in just seconds. This is like changing your document font from Times New Roman to Arial within your MS Word document itself!!!! This means, now you can use a combination of Indian Language fonts, even if you compose your document with one software, having a limited number of fonts.

One of the biggest limitations of the Indian Language Software Titles available in the market today is, you can type only in the supported font. **FontSuvudha** gives a much-awaited convenience to the Indian user, to use more than 200 fonts even if one has a software allowing use of a few fonts. Yes! Now it is possible to type your documents in any Devnagari software & make use of any other Devnagari fonts from other vendors for decorating your document!!!!

The conversion facility is extended to HTML, TEXT, Excel, Dbf, MDB files also. Thus, such files can now be universally handled. The Text File Converter comes handy with capability to convert text files from any format to any other format. Web developers can use the HTML file converter to manage files across various font formats. A great utility offered by **FontSuvudha** is the Clipboard Converter. This allows the user to convert the text in the clipboard to any desired font format. This facilitates the user to manage files in packages like PageMaker, Netscape Composer, Dreamweaver, Wordpad etc. or any other Windows based application software.

FontSuvudha 6.0 comes to you with a total of 56 format conversions. We are constantly adding to the collection & will provide you update on these as & when one is developed. For this, it is extremely necessary that you register yourself with us, so that we can keep a track of your whereabouts to inform you of the updates. You can fill up the Registration Form available in the Program Group of **FontSuvudha**.

[TOP](#)

Technical Specifications

Name of Software : FontSuvudha 6.0 - Professional.
Version : 6.0.
Date of Release : 21st March 2004
No. of Formats : 56 Popular Devnagari Fonts Format.

Names of Formats:

1. Ajay Normal (C-DAC ISFOC/AllType)	2. AkLite (Akruti)
3. AkrutiDev (Akruti)	4. AkrutiGaneshDev (Akruti)
5. AkrutiOffice (Akruti)	6. AkrutiDevWebRbi
6. Aman, Ankit	Agra (Moser Database)
7. Amar Ujala	8. APS-DV (VSOFT)
9. APS-EML-DV (VSOFT)	10. Bhartiya Hindi
11. Bhaskar	12. Chanakya (Summit/Indica)
13. DVB-TT (C-DAC)	14. DVBW-TT (C-DAC)
15. DVONIL (Sulipi)	16. DV-TT (C-DAC)
17. Gul	18. ILDV (Cybershoppee/FontFreedom/Freedom)
19. ILDVW-Web Series (Cybershoppee)	20. Indian Script Code For Information Interchange (ISCII)
21. ITR-ATM	22. ITRFK-Dev (ITR/Modular/Shree Lipi)
23. ITR-TTF	24. Jagran
25. Kautilya (WordStream)	26. Kiran
Amruta	Aarti Fonts
27. Kruti Dev Series (More Services)	28. LangscapeDev (Freedom/Akruti)
29. LokWeb (Loksatta Internet Edition)	30. LscapeRegDev (Freedom/Akruti)
31. Maha (Maharashtra Times)	32. Millennium (Cybershoppee/FontFreedom/Freedom)
33. Mithi	34. Naidunia (Naidunia/Webdunia)
35. Narad	36. Sahara India
37. Samskrt	38. Shivaji

Shusha (BharatBhasha)	39. SHREE708 (ShreeLipi-ATM-Version 2.0/3.0)
40. SHREE709 (ShreeLipi-ATM)	41. SHREE709 (ShreeLipi-ATM-Version 2.0/3.0)
42. SHREE714 (ShreeLipi-ATM)	43. SHREE733 (ShreeLipi-ATM-Version 2.0/3.0)
44. Shree-Dev (ShreeLipi-TTF-Version 5.0/Ankur)	45. ShreeDev Series (ShreeLipi-TTF-Version 3.0)
46. SUBAK (Sakal News Paper)	47. Sudipto (Maharashtra Times)
48. Umesh Fonts	49. UNI Fonts
50. UNICODE Fonts (Mangal	Arial Unicode MS)
51. Xdvng	52. Yogeshweb
53. NCHindi	54. Express
55. Dv Divyae	56. AkruitiDevWebRbi

Note: If you have any other formats that do not appear in this list and you feel should be included in this Converter, please let us know. Also send us the TTF file & a DOC file containing text composed in the related font.

Important Note: Some of the components of this software, viz. HTML/Text Converter, MS Excel Converter and Database Converter have few issues on the latest operating systems (Windows 7, Windows Vista). Results on Windows XP with Service Pack 3 may also have some issues. In such case, please contact us.

[TOP](#)

Who can use FontSuvudha?

Any person or organization using any Devnagari editing software can use **FontSuvudha**. These include Newspapers, Book Publishers, DTP Houses, Journalists, Individuals and of course Government Organisations.

The wide variety of Devnagari Editing software available in the market today, and with the diversity of the keyboards, it is practically impossible for one to buy all these software packages. Thus users are deprived of reading and editing material composed in fonts not supported by the software available with them. Such users can now benefit from the **FontSuvudha**. All they need to do is, change the font of the document to the one available with them and go on reading!

Newspapers can get their news from journalists sitting at home, using any software or font available. This material can be converted to the font of choice, using **FontSuvudha**, and be sent for publishing. Journalists can thus report in Real Time, without the need of having access to a computer where a particular font used by their newspaper is installed. The filing of News item or report can be done even from a Cybercafe.

Feature Agencies can particularly benefit from **FontSuvudha** as they can now get typed material from many sources, without the need of a particular font. The material thus received can be accommodated to use the default font used by the organization. It will even make the distribution of material and features to various customers, in their own formats.

DTP houses can now benefit from the **FontSuvudha**, as they don't need to have so many different packages to work in Indian Languages. They can get typed material in any software, in any font, and can convert it to the one they want.

In **Government offices**, where a number of software and fonts are used in the same department, an acute problem that of interchangeability of documents from one desk to other has posed many problems. Government offices can now benefit from **FontSuvudha**, as documents composed on any software can now be opened using **FontSuvudha**, can be edited and be sent to the originator. This will give boon to the concept of paperless e-governance in real terms.

Book Publishers can benefit from **FontSuvudha**, as in these days of Information Technology, many authors have started using computers for writing. Publishers can get the electronic manuscript from these authors, no matter what font has been used, and can work on the same using the font of their choice.

With the widespread use of Indian Language editing software in the **Home Sector**, the need of such a facility was much felt. **Individuals** can now exchange documents, no matter what font or software has been used, and read, edit or comment on the document freely.

[TOP](#)

Fonts and Font Families

The various sets of characters that we use for typing our documents are called Fonts. A font comprises of set of characters, generally with a common look and texture. In English, the fonts comprise of characters like A to Z, 1 to 0 and other standard characters like \$, &, #, @ etc.

In case of Devnagari, this differs in a big way. Unlike in English, there are many complications while writing in Devnagari. We need to represent characters and words with Matras, Anuswaras, Kaanaas etc. This involves the use of both upper and lower ASCII characters, which are mapped to the keyboard. Here exactly lies the problem of standardisation of Devnagari Fonts. Many companies developing fonts and technologies in Devnagari had used different mapping styles for these characters, thus resulting in the problem of non-compatibility.

The primary aim of **FontSuidha** is to convert documents from one **KNOWN format** to another **KNOWN format**. The basic assumption here is that, someone who is trying to convert a document **MUST** know the source font and the destination font. If he doesn't know either of these, he does not need conversion.

Before going ahead with the actual use of **FontSuidha**, it will be helpful to know some basic facts about the fonts and font families.

There is a big difference in **FONT** and **FONT FORMAT** or **FAMILY**. The sections below will be of great help to those using FontSuidha.

FONT FAMILY:

This is known as the **FONT FORMAT** also. This is the set of encoding for the font. The basic issue of non-standardisation of Devnagari fonts revolves around this. The encoding of fonts developed by various vendors differ in a big way and this is the reason we had to develop **FontSuidha**.

There are a number of such Font Formats or Font Families existing in the market today. There are many complications in this issue too. If you think that one manufacturer constitutes to one family, it is not so. There are instances where a same manufacturer has developed and distributed more than one family. The example of this is C-DAC, AkruTi and ShriLipi. C-DAC has more than 2 formats. AkruTi has 4 formats and in case of ShriLipi there are many.

In short, a **FONT FAMILY** is something like DV-TTABCD, DVB-TTABCD, AkruTiDevXYZ etc.

FONT:

This is the actual set of characters in a **FONT FAMILY**. There can be a number of such **FONT**s in a specific **FONT FAMILY**. There could be Ten, Hundred or a few Hundred **FONT**s in **ONE FONT FAMILY**. The Fonts in a family have the same encoding. That means, there is a full transformability of documents from one font to another if the **FONT** belongs to the same **FONT FAMILY**. This is the reason we can use fonts like DV-TTSurekh and DV-TTYogesh, without the need of **FontSuidha** Converter.

SOURCE FONT FAMILY:

This is the **FONT FAMILY** in which a document is composed. The person using the converter may not be having the **FONT** of the **SOURCE FONT FAMILY** and thus he needs to convert the document from a **FONT** in **SOURCE FONT FAMILY** to a **FONT** available with him on his machine.

DESTINATION FONT FAMILY:

This is the **FONT FAMILY** which one needs to convert a document into. Anyone using any Devnagari software knows which software he is using. The **FONT NAMES** in particular software start with some similarity such as AkruTiDev, DV-TT, DVB-TT, SHREE etc. This is known to the person trying to convert a document. However there are some exceptions to this too. There is no such common string in the FONT NAMES in case of FONT FAMILY of Moser Database and to some extent, BharatBhasha. This is another example of non-standardisation. We just can not do anything about it.

DESTINATION FONT:

Any user trying to use **FontSuvudha** must at least know this. This is the name of the actual font available with him. Thus, he can select the destination font without trouble. There may be some confusion in the minds of some of the users while selecting the destination font and we would like to throw some light on this critical issue.

The FONT names in the list of DESTINATION FONTS appearing in **FontSuvudha** are hardcoded into the software itself. In some of the families, there are more than few hundred fonts in use. It is practically impossible to include all of them. Further, it is practically impossible for the user to scroll down the list every time he wants to convert some text. Thus, we had to include only few font names that are commonly in use. There are possibilities where some of the FONT NAMES in some FONT FAMILIES may not be appearing in the list.

This may create some confusion in the mind of the users. Here is an example, which could throw some light on this. SHREE Lipi TTF Series, we have included only about 30 Font names, whereas there are more than 500 other font names belonging to the same family. Since we **DID NOT** want to give a big scrollable list, which could prove to be a problem for frequent user of FontSuvudha, we did not include all of them in the list. However this **DOES NOT** mean that the conversion is not included. The conversion very much takes place. However the user may see some junk on his screen. He then needs to just change the font of the document to the desired one manually.

Here exactly the assumption that one should know the font family name of his font comes in picture. If you know you are using Shree Lipi TTF fonts, and have been using these fonts, you can see all the names starting with SHREE, followed by a number. Now if you don't find a particular font number in the list, you can convert the text into any other font starting with SHREE. You may see some junk on the screen. Now all that you need to do is, select this junk and change the font name from the ones you have and you are through!

There are a number of **FONT FAMILIES** in use. For a complete list, please look at the bottom of this document.

[TOP](#)

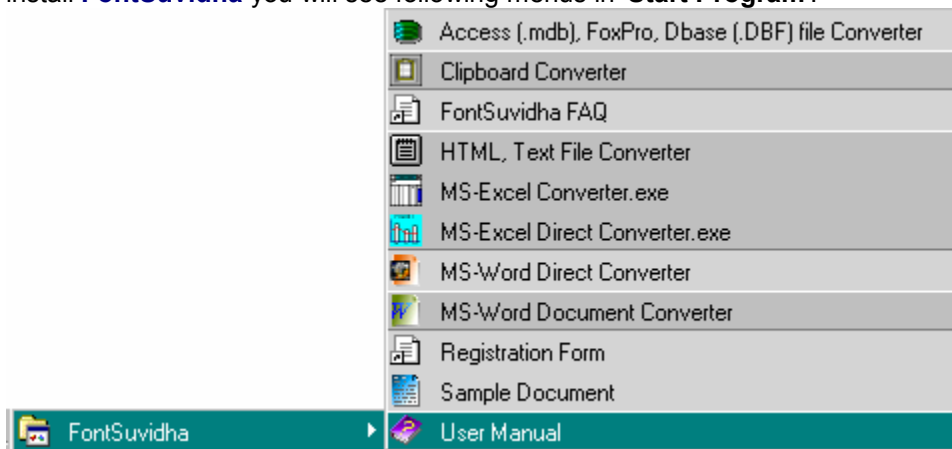
Installation

Please read the **Readme.txt** file included in the set up kit. The installation is very simple. We recommend, you please read the following sections before actually going ahead with the use of FontSuvudha. This will give you some in-depth idea about the terminology and inscriptions used in the software.

[TOP](#)

How to Use This Package

For using '**FontSuvudha**' you will need to keep the CD inside your CD-ROM drive. After you install **FontSuvudha** you will see following menus in '**Start Program**'.



[TOP](#)

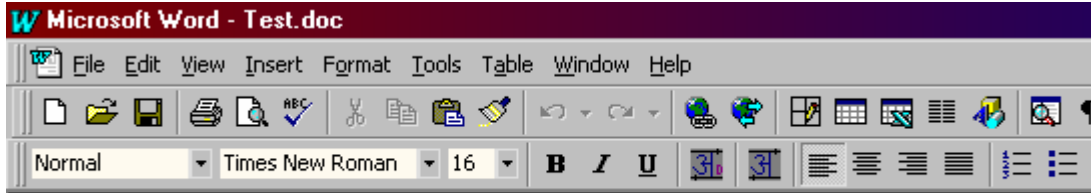
- **Converter For MS-Word**

This module is for converting the MS Word documents from within MS Word only. There are two converters for MS-Word.

- **MS-Word Document Converter:** In this case user needs to select the data, which he wants to convert. Then he needs to run '**MS-Word Document Converter**' and select the source font family and destination font. After that when he clicks on convert button, selected text will get converted to destination font.
- **MS-Word Direct Converter:** This is just like changing your font from Arial to Times New Roman. This is a quick module, enabling you to convert the selected text without going through the steps as mentioned above. All you need to do here is, just run the '**MS-Word Direct Converter**' once. Then just change the Font in the Font Window of MS Word and that's all. The entire proceedings are then taken over by the program and the conversion is done for you.

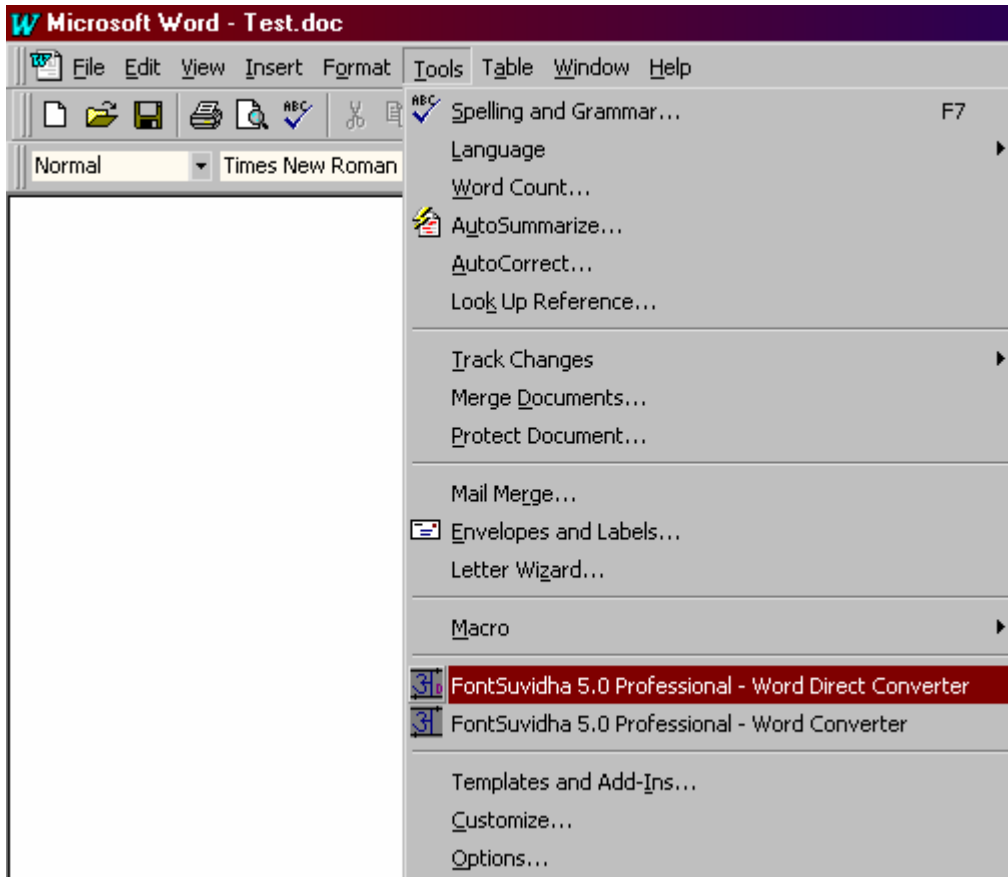
User can run these converters from two locations. One is the 'Start Program' menu and second one is from MS-Word.

In MS-Word on the Format Toolbar two icons appears as shown below. One icon is for 'MS-Word Document Converter' and second is for 'MS-Word Direct Converter'.



MS-Word Direct Converter MS-Word Document Converter

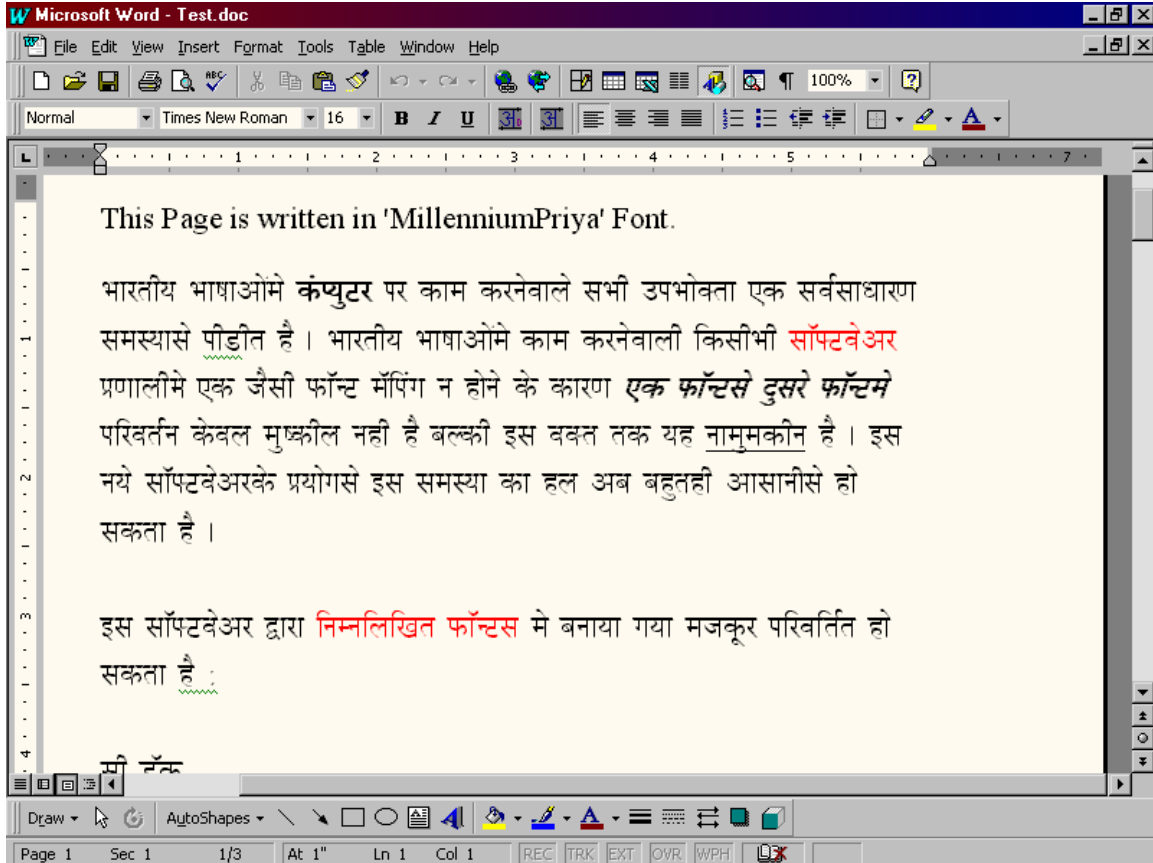
These two are also available in 'Tools' menu of MS-Word.

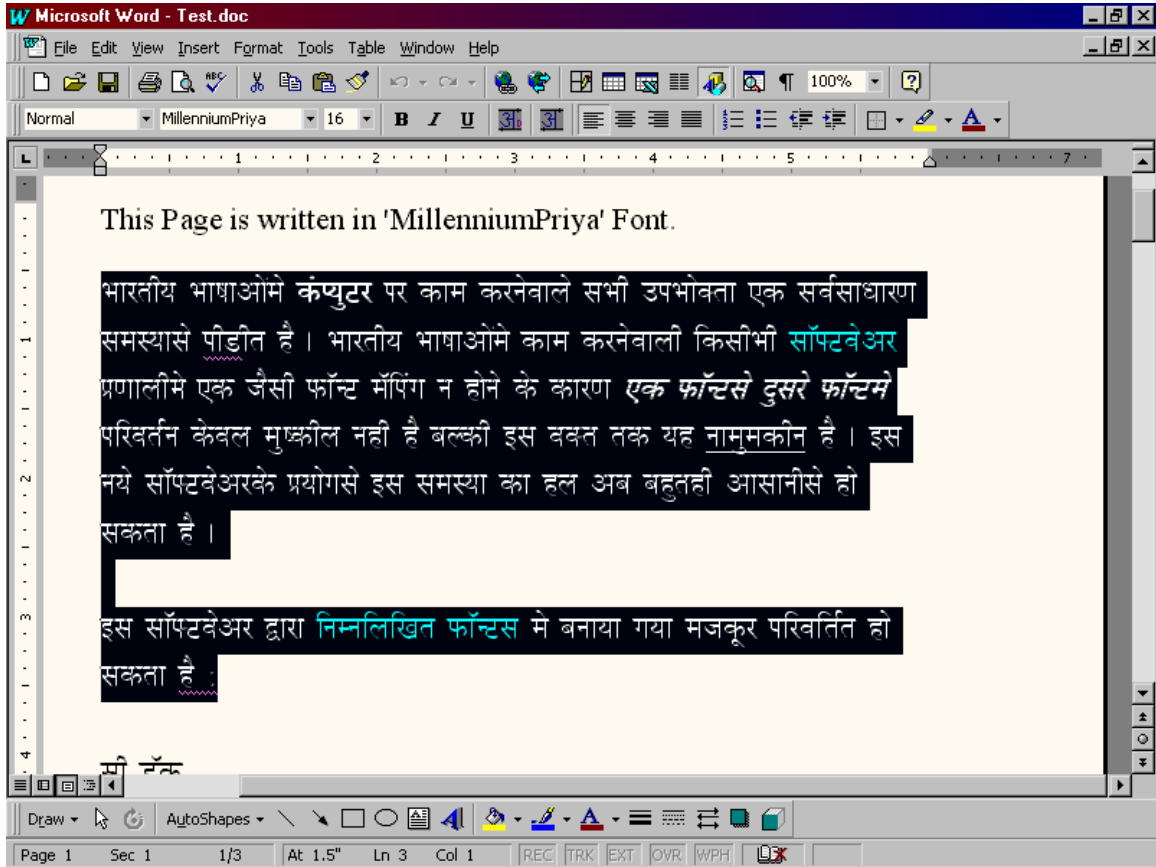


[TOP](#)

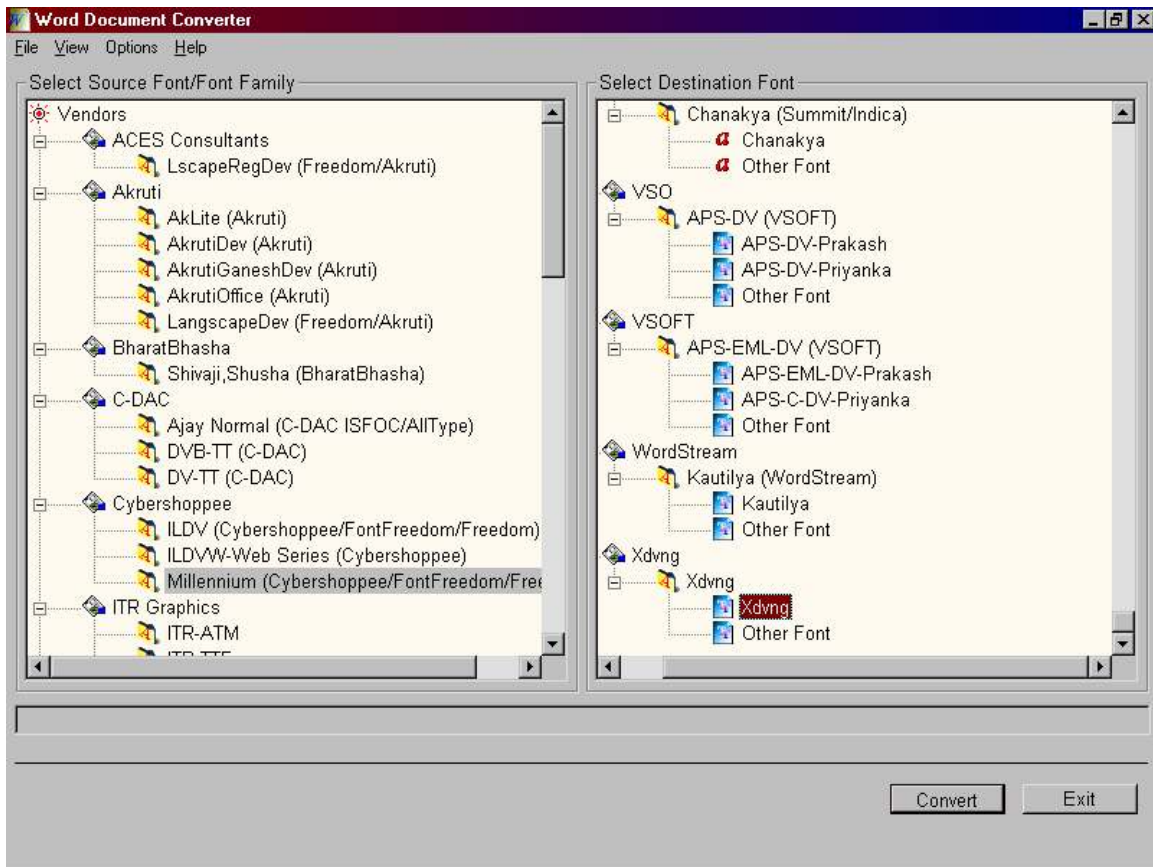
- **MS-Word Document Converter**

To use this converter first you select the text, which you want to convert.





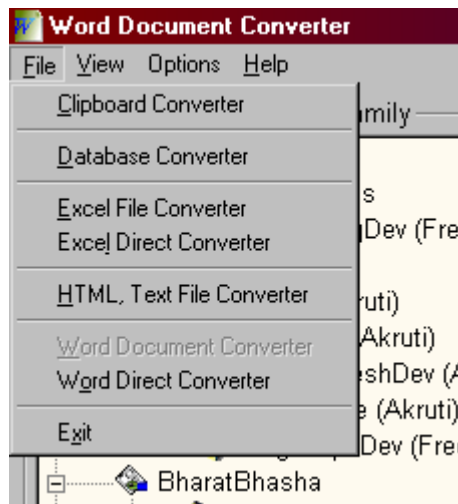
Then you run this converter.



There are four menus in this converter.

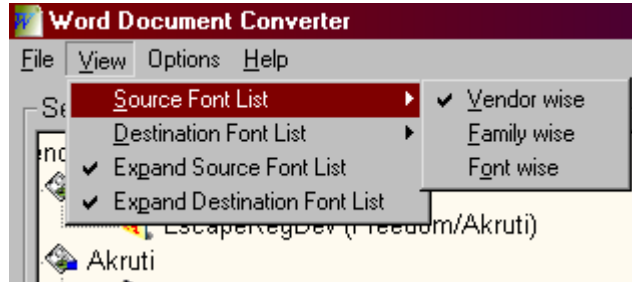
- **File**
- **View**
- **Option**
- **Help**

File Menu:



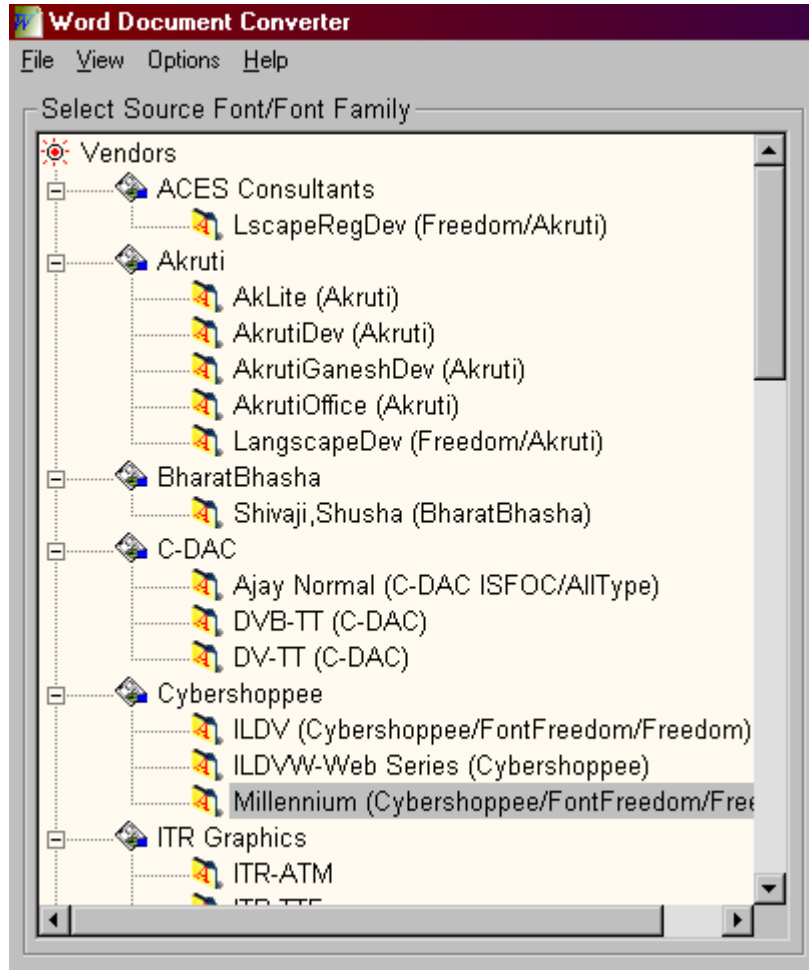
From the **File** menu you can run other converters if you want.

View Menu:

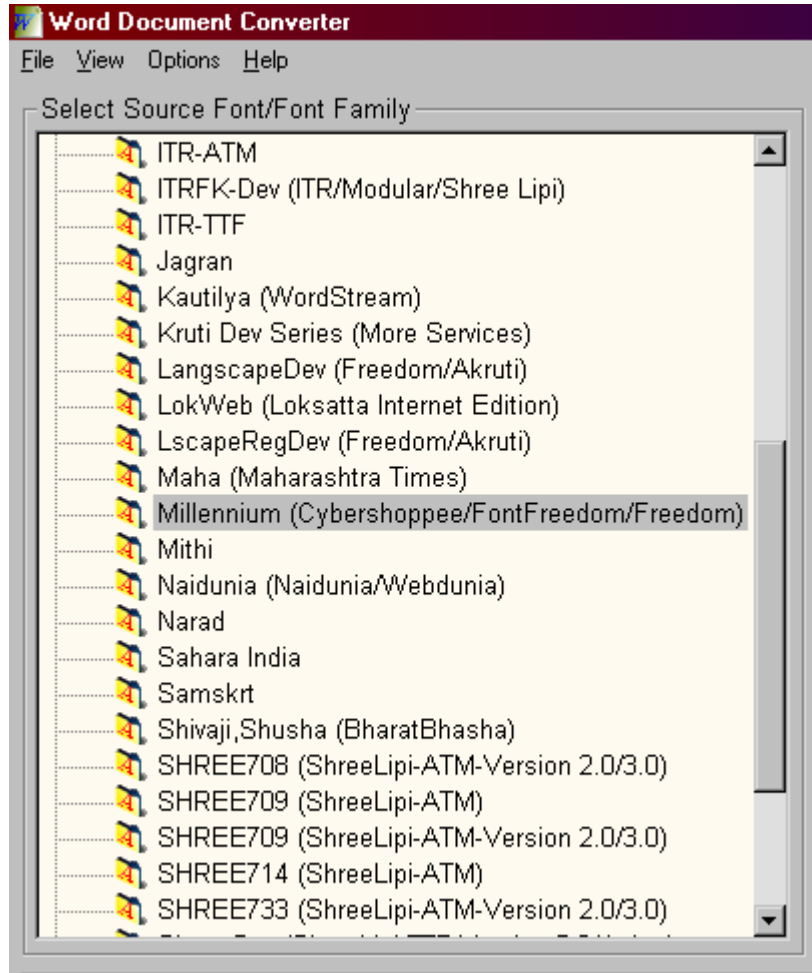


Using '**View**' option you can see source font family list and destination font list in three different types.

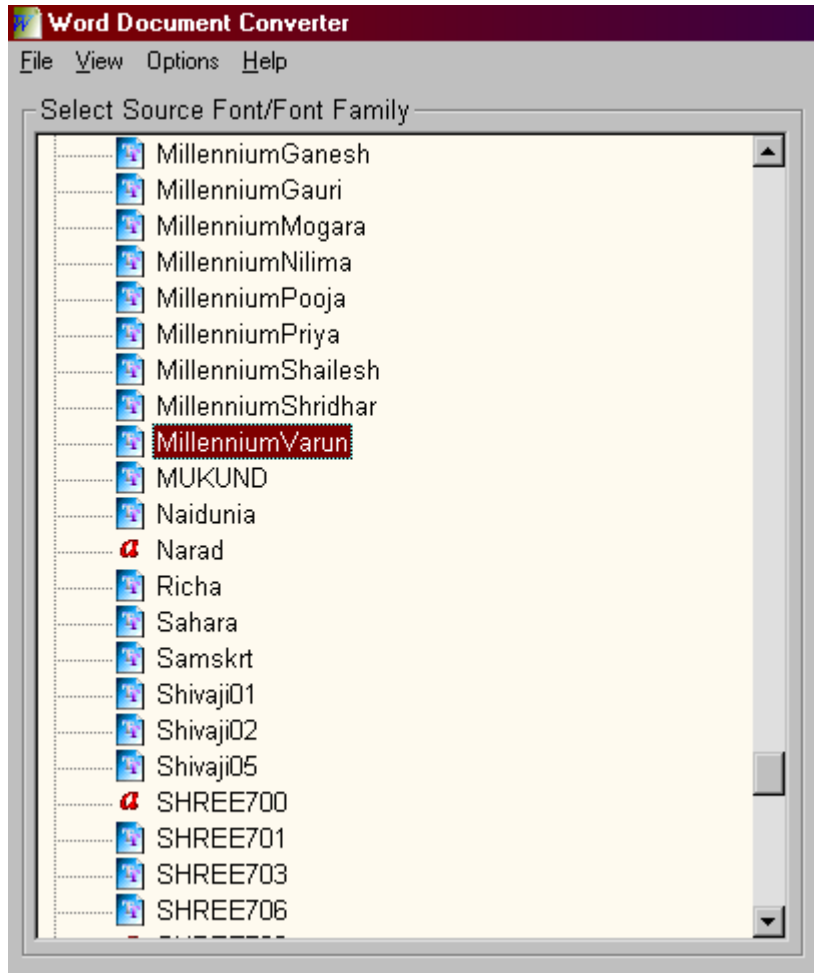
1. Vendor wise



2. Family wise

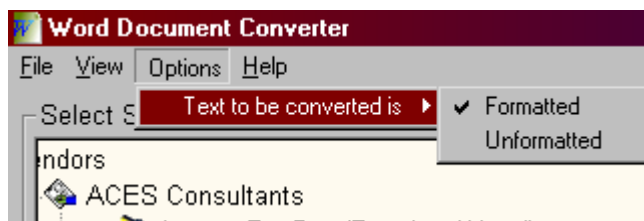


3. Font wise



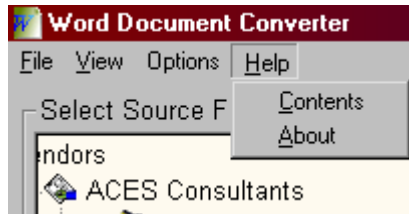
You can expand those lists using the 'Expand Source Font List' menu.

Option Menu:



You can have both types of conversions i.e. Formatted or unformatted. In formatted type the attributes of text like bold, italic, underline, strike through, size color are get maintained after conversion. You can select the type from options menu.

Help Menu:



Once you select the data to be converted you will need to select the source font family and destination font from the list.

Selecting Source Font Family: When you run this converter you get source font family list in the left side of the screen. You can select the desired font family. But in some cases it may be required not to select just font family but also the font under that family. This is because in some font families there are fonts that have almost same font mapping with few differences whereas in other cases all the fonts under respective family have same font mapping.

Note: When you view source font family list font wise, you have to select the font form the list. This type of view is given to because it may be easier for you to select source font rather than source font family.

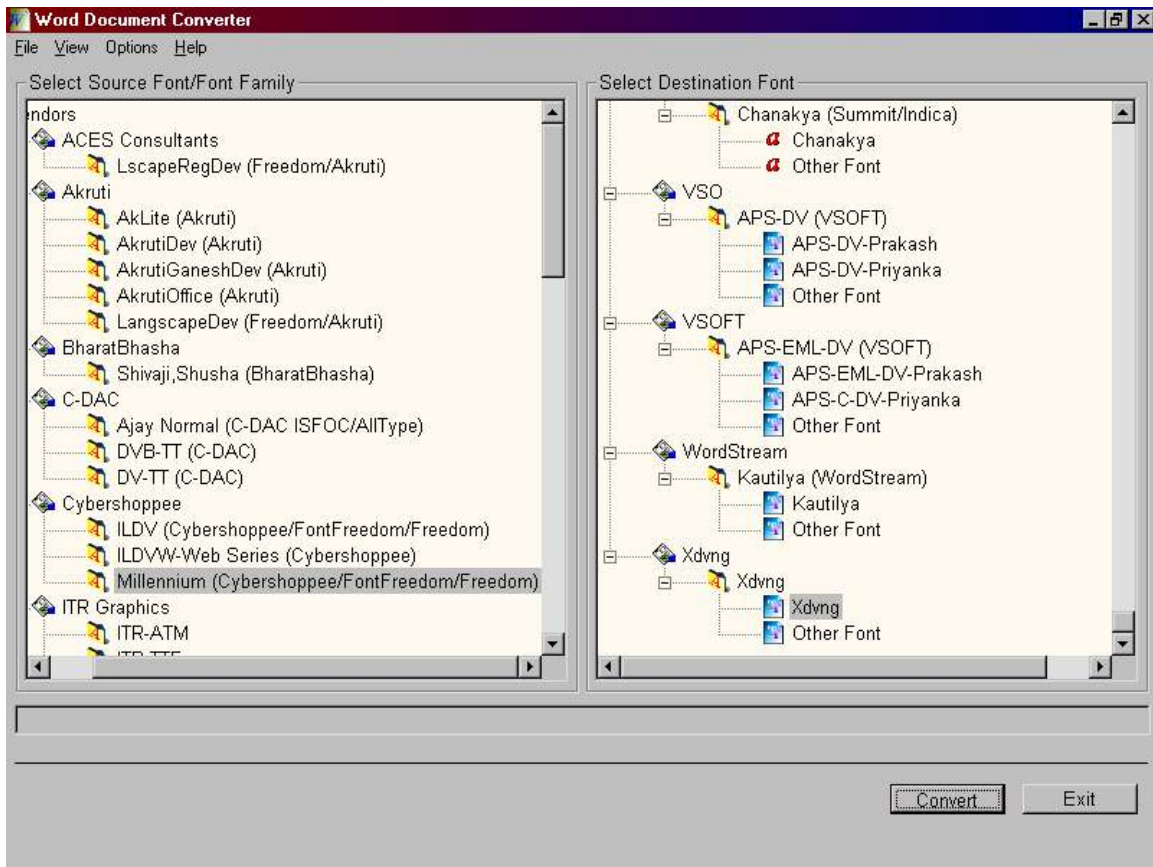
[See Also Fonts and Font Families](#)

Selecting Destination Font: You get destination font list in the right side of the screen. You can select the desired font. Here it is compulsory to select the destination font any in any case. That means it is not enough that you just select the font family. If the font from destination font family is available with you and if it is not there in the list then in that case you can select the '**Other Font**' item in the list which is last in each family. So when you select this item converter will ask you to specify the name of font.

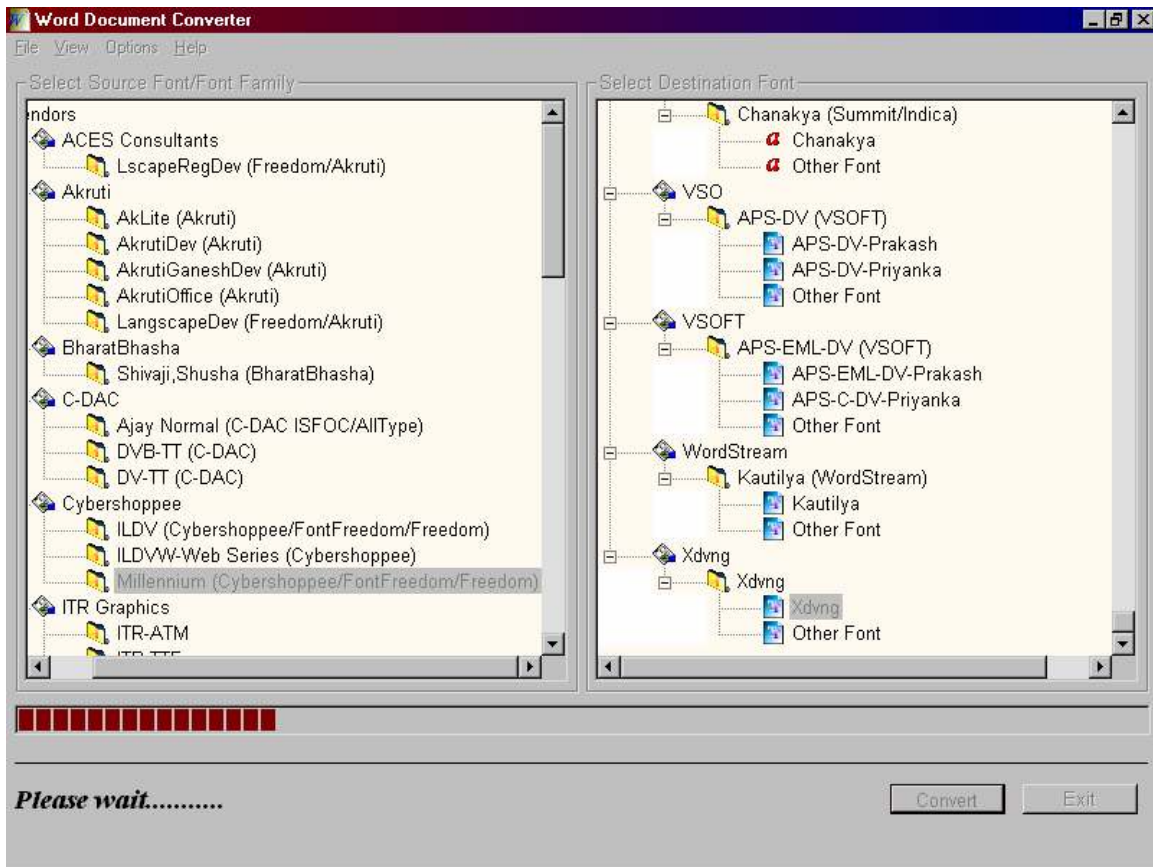
Note: In previous versions of **FontSuvudha** there used to be three lists. First was source font family, second was destination font family and third was destination font. So user had to select the source font family from first list, then destination font family from the second list and then corresponding to that family he had to select the font from the third list.

[See Also Fonts and Font Families](#)

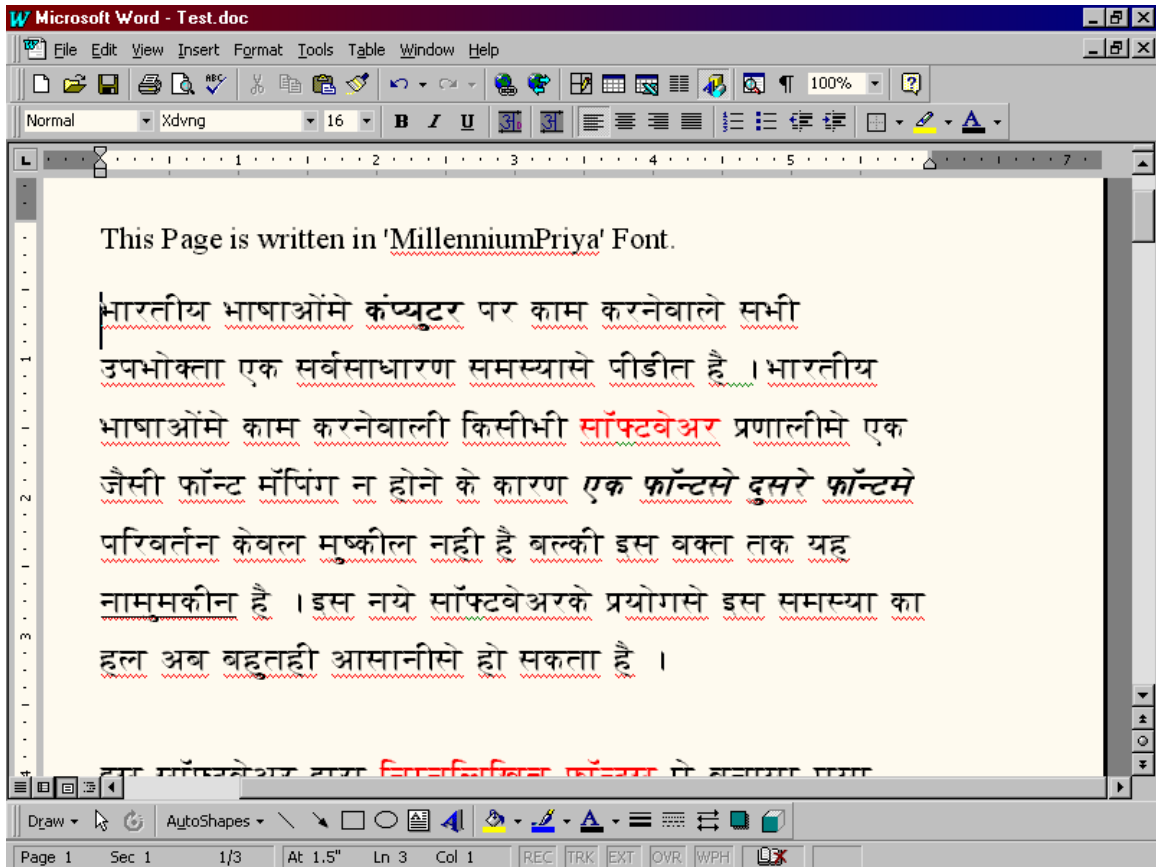
After selecting proper values of source font family, destination font, formatted or unformatted text you can press convert button.



You will see the progress during the conversion.



And finally you will see the converted text.



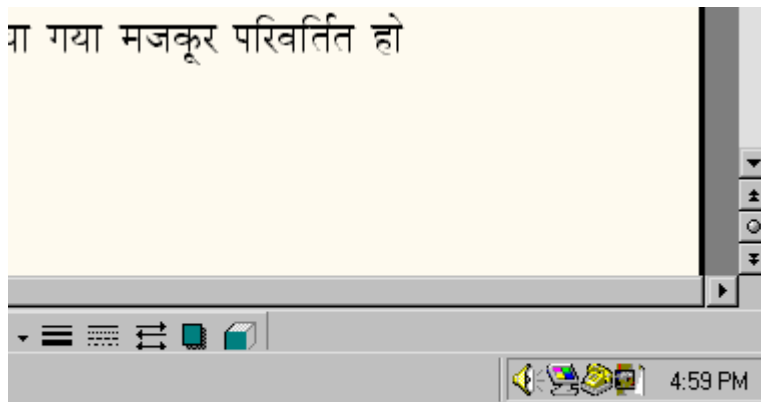
Once the conversion is done you can select another text and do the conversion again. You will not need to select the various parameters (like font family, font) again. Recently selected parameters will be automatically saved. In old versions user had to select these parameters again and again.

Note: If some characters which are not supported by the destination font family are present in the source file then those characters will be replaced by boxes or *. Read more about this in the section [Non-compatibility issues and their effect on conversion](#).

[TOP](#)

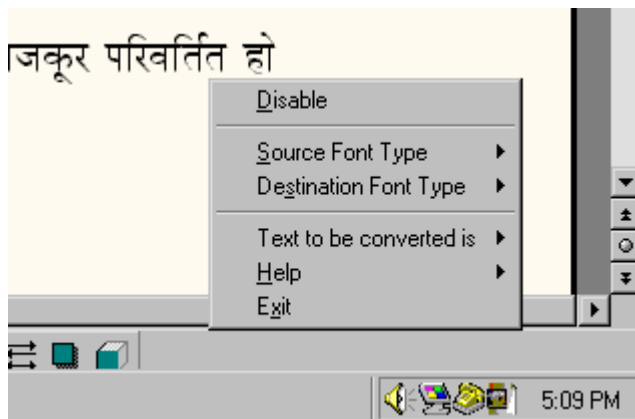
- **MS-Word Direct Converter**

When you start MS-Word you can run this converter. You will see the icon in the system tray in right bottom corner on task bar.



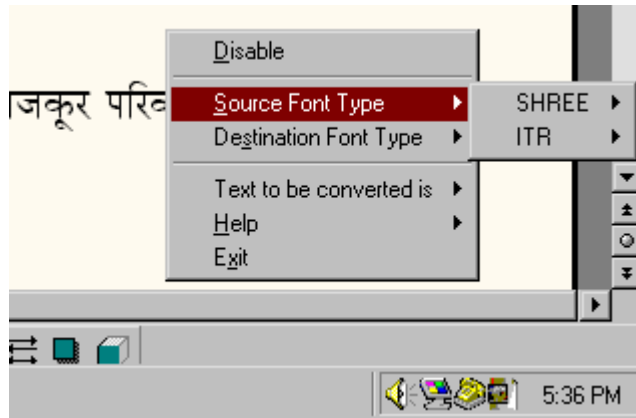
MS-Word Direct Converter

If you click on that icon you will get the following menus.



Disable/Enable:

You can disable this direct converter if you do not want conversion to be get done while changing the font of the text. You can enable it when you want. When you first run this converter by default it will be in enabled state.



Source Font Type, Destination Font Type:

'**Source Font Type**' and '**Destination Font Type**' selection is required in case of Shree Lipi fonts and ITR fonts. This is because shree lipi fonts have different versions. And font names in all versions are same; e.g. '**Shree708**' font is available in more than two versions. So when you want to convert data from/to such type of font you can select appropriate versions in the '**Source Font Type**' or '**Destination Font Type**'. As far as ITR fonts are concerned there are two types '**ATM**' and '**TTF**'. In case of conversion of these fonts you can select above parameters accordingly.

Text to be converted is:

As per your requirement you can select the conversion type i.e. 'Formatted' or 'Unformatted'.

Once this converter is started when you change the font of selected text conversion will take place.

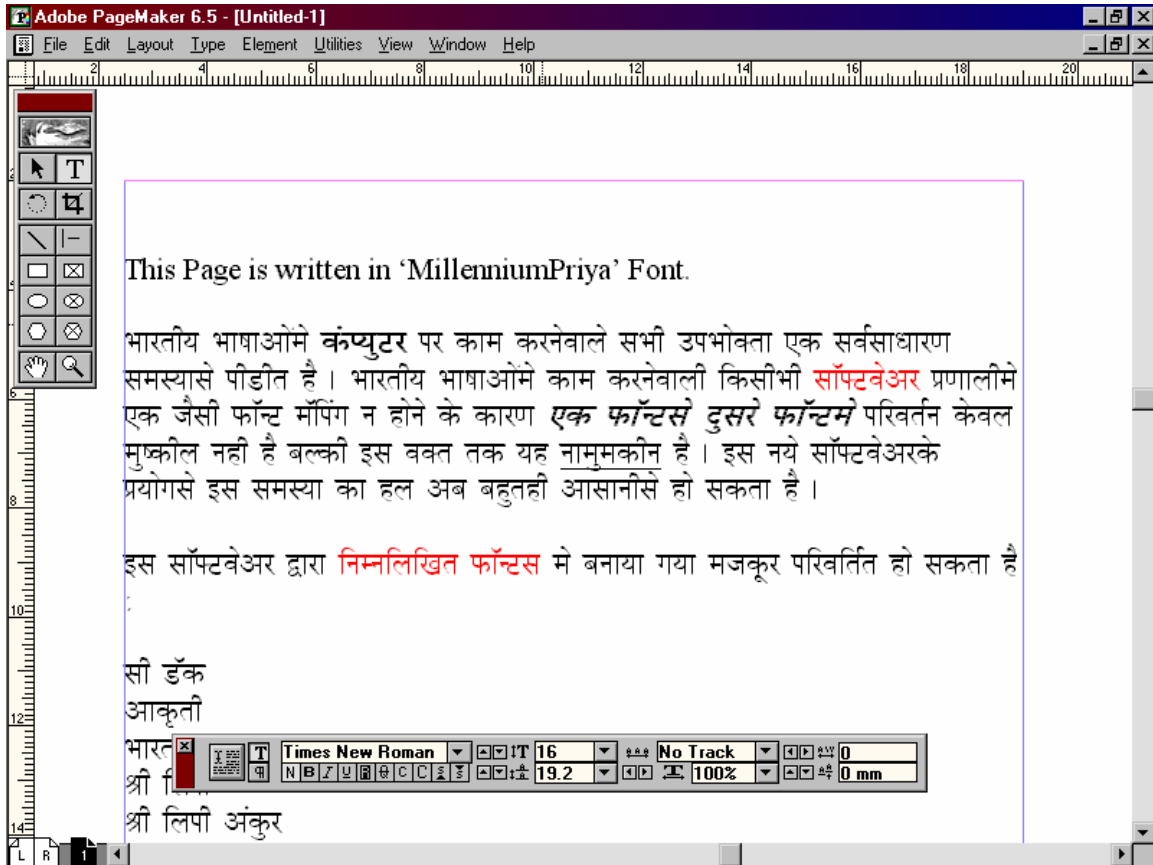
Note: If some characters which are not supported by the destination font family are present in the source file then those characters will be replaced by boxes or *. Read more about this in the section [Non-compatibility issues and their effect on conversion](#).

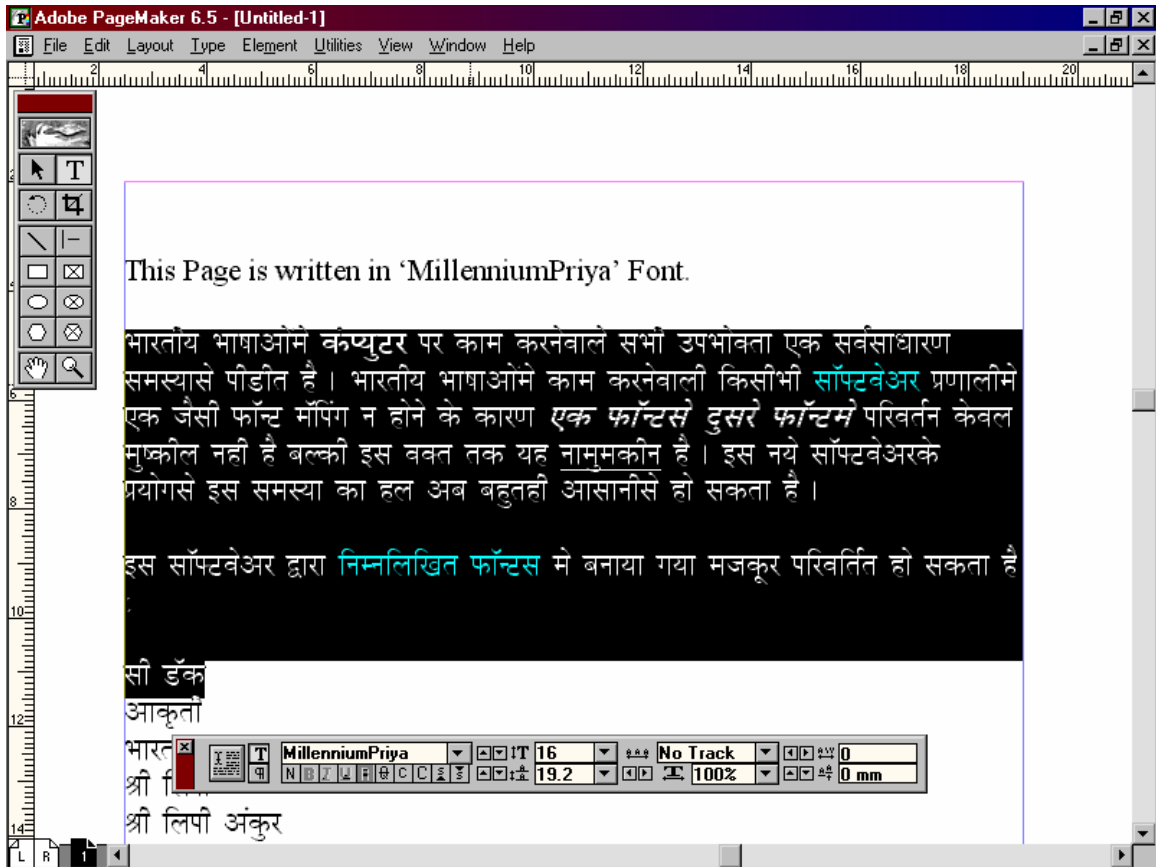
[TOP](#)

- **Clipboard Converter**

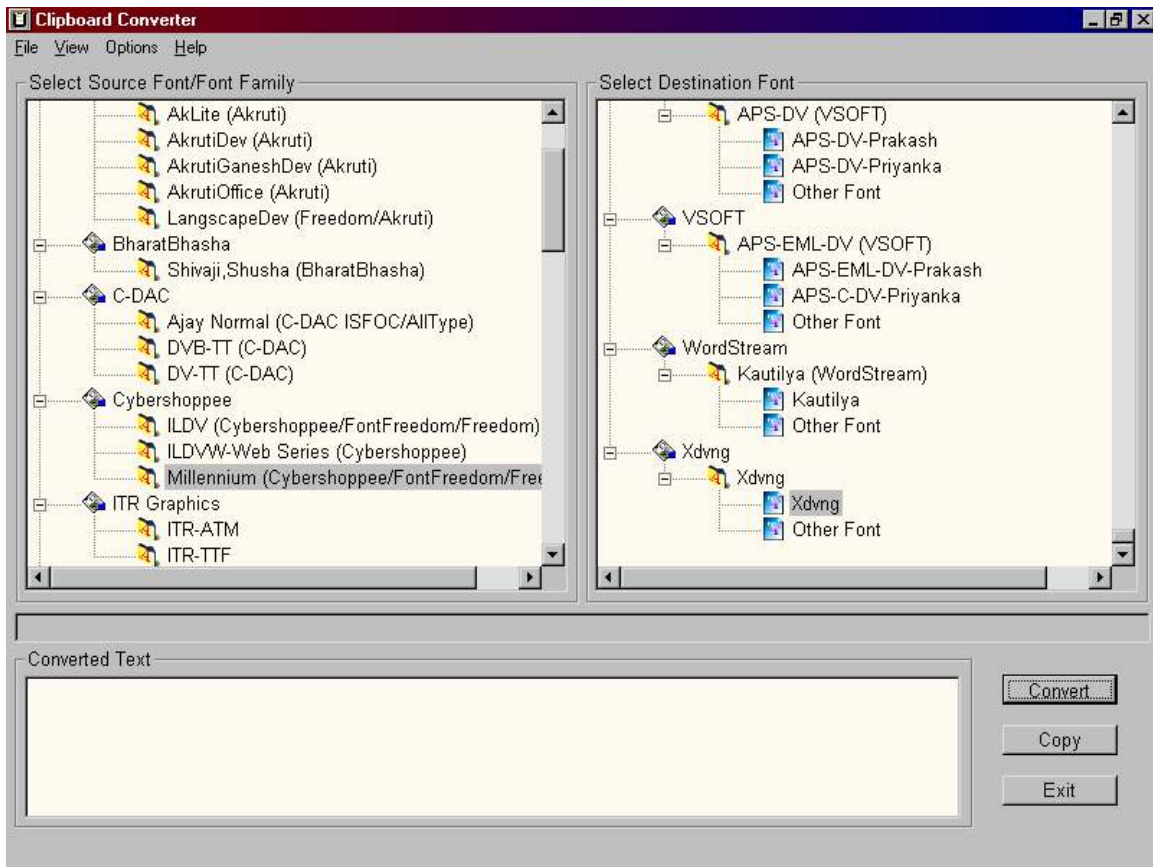
This module is very useful for converting data from PageMaker, PhotoShop, Power Point or other such documents.

First you select the text in the application that you want to convert.

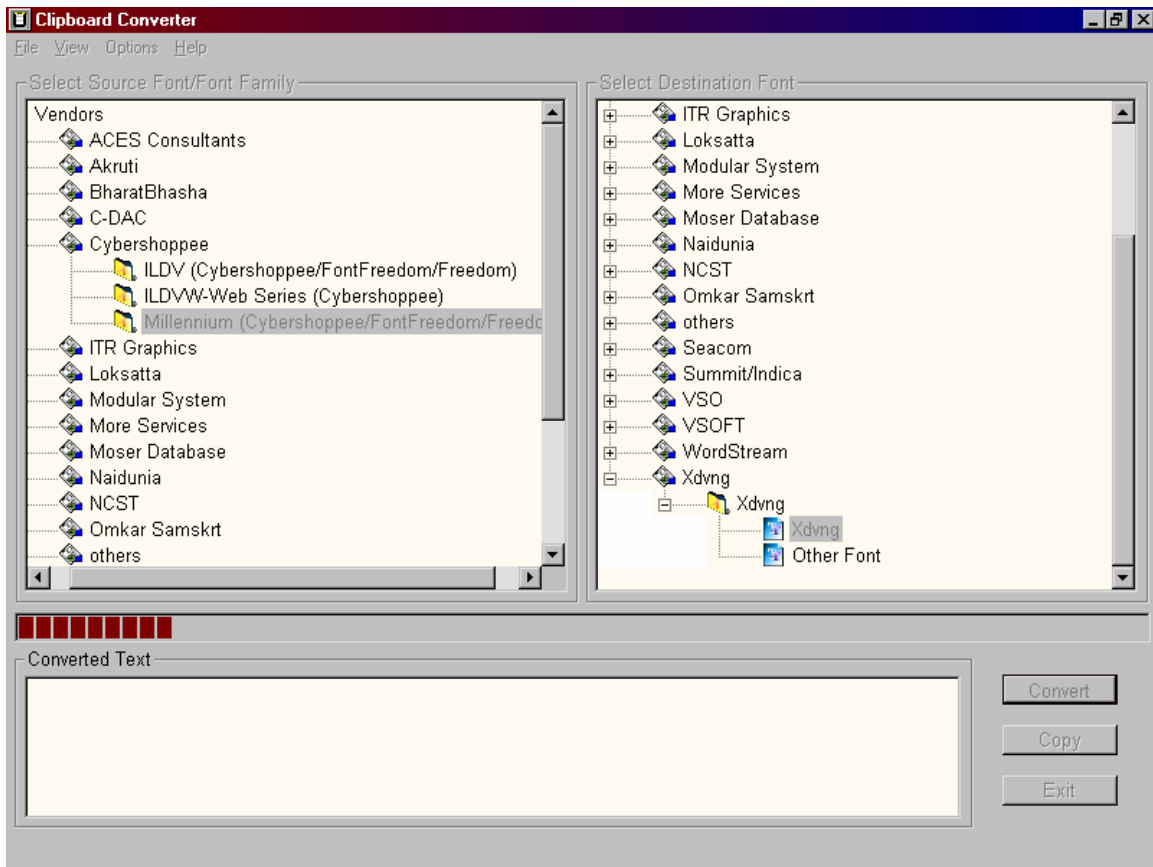




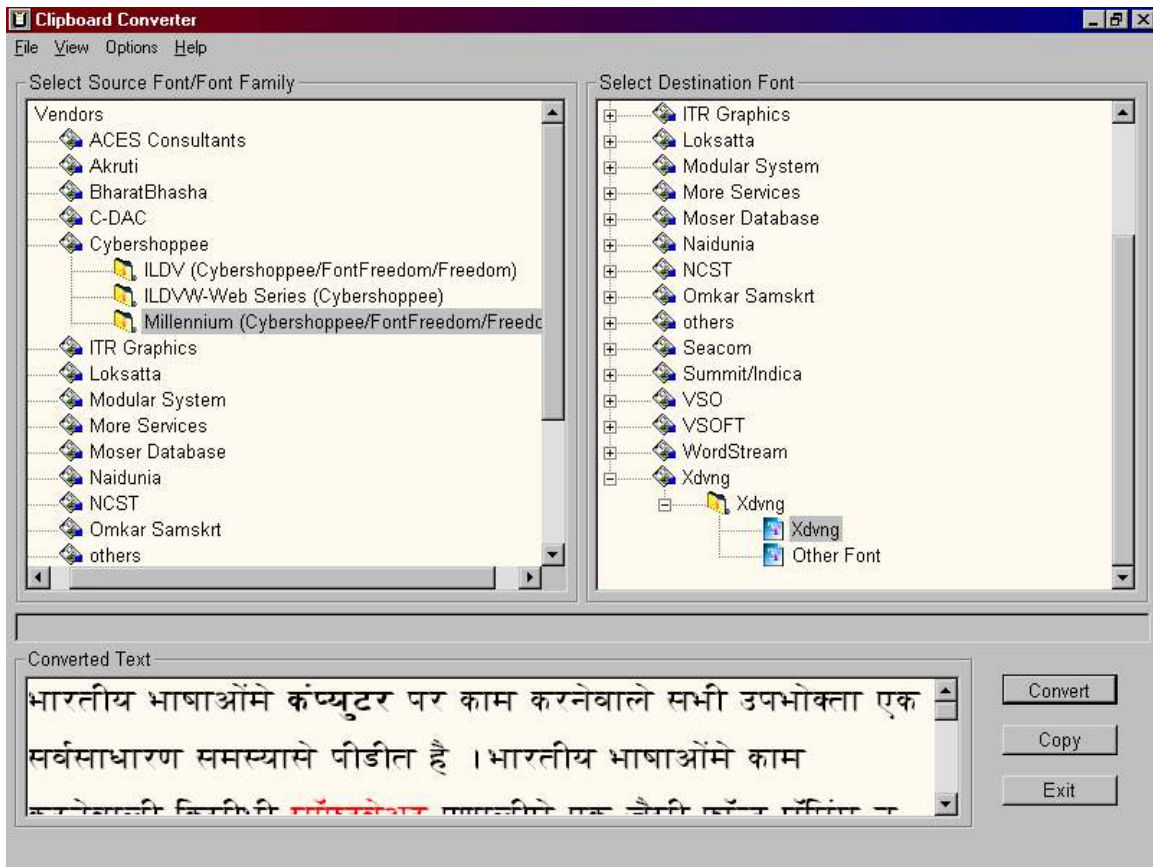
Then you copy that text. Generally you do it by 'CTRL+C'. After that you run **Clipboard converter**.



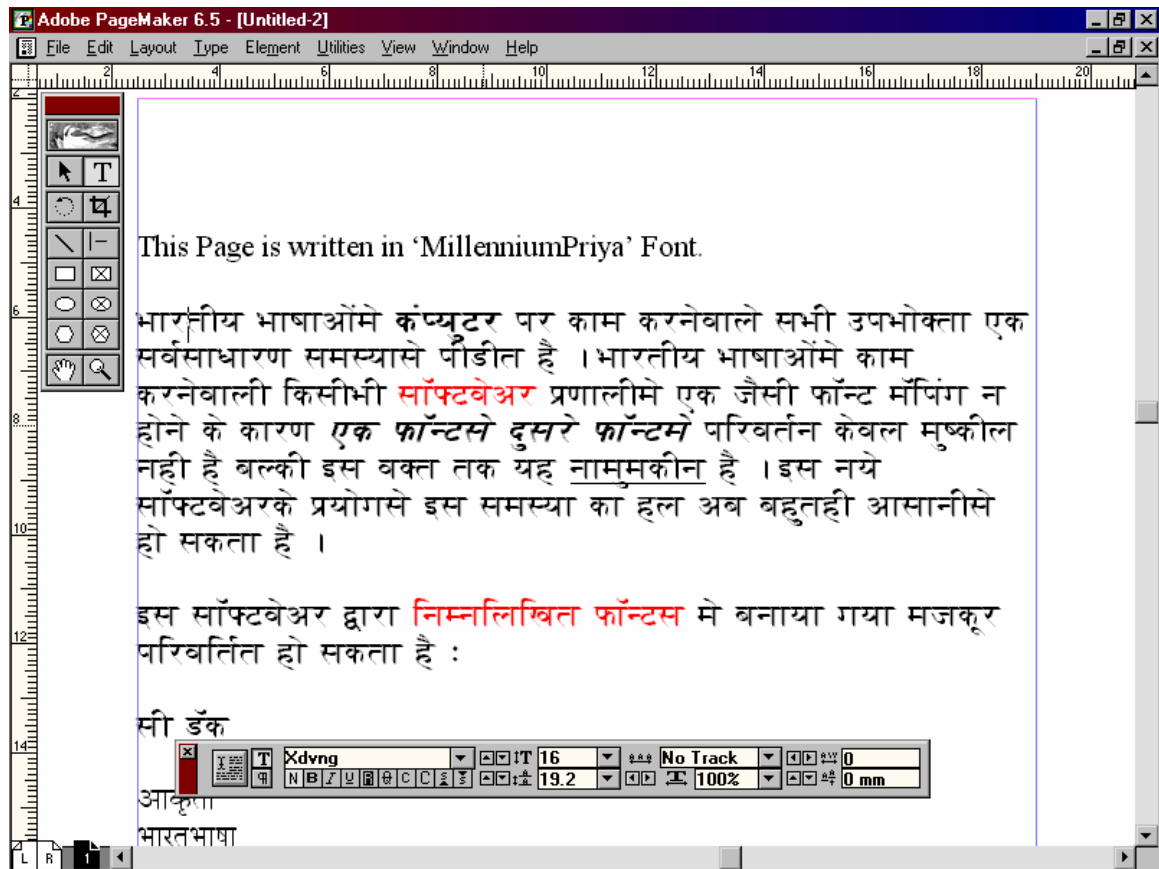
All the menus are same as **MS-Word Document Converter**. You select the source font family and destination font as explained earlier. Press '**Convert**' button so that conversion will start. You will see the progress bar during the conversion.



You will see the converted text in '**Converted Text**' box.



You just go to your application from where you copied the text. There you just paste the data (using 'CTRL+V'). **'Copy'** button is for copying converted text to clipboard. By default after conversion converted text will be copied to clipboard.



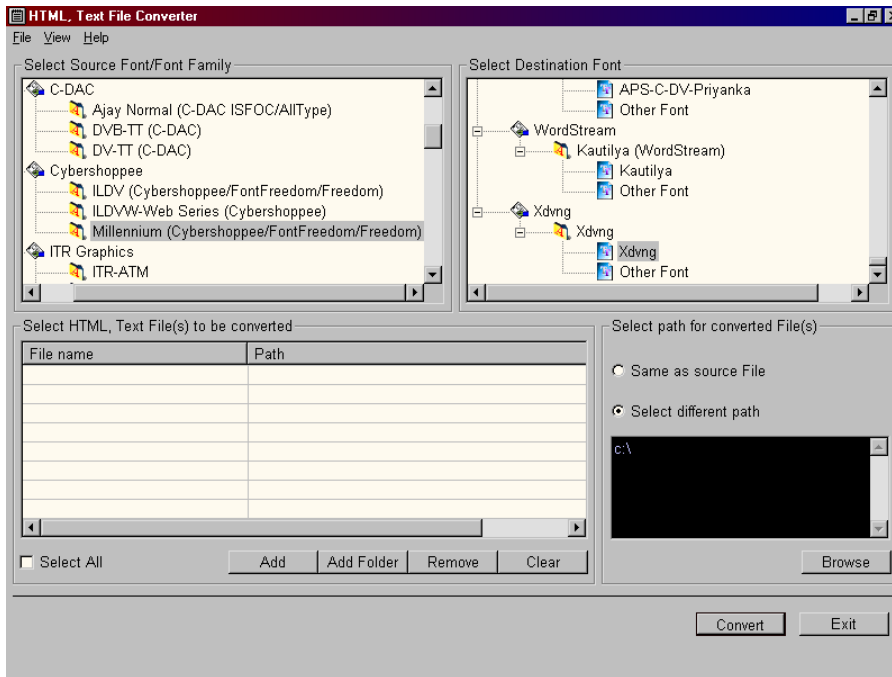
Note: If some characters which are not supported by the destination font family are present in the source file then those characters will be replaced by boxes or *. Read more about this in the section [Non-compatibility issues and their effect on conversion](#).

[TOP](#)

- **HTML, Text File Converter**

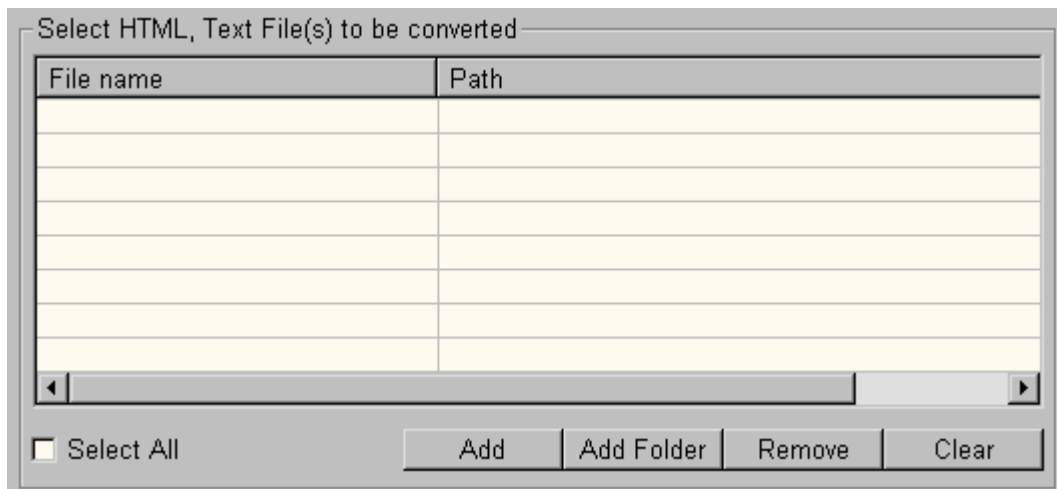
(This converter module has limitations on certain new operating systems like Windows Vista and Windows 7. Please check the readme.txt file included in the distribution kit to know more about this and the possible remedies)

This converter allows you to convert the entire HTML or text file(s) at once.



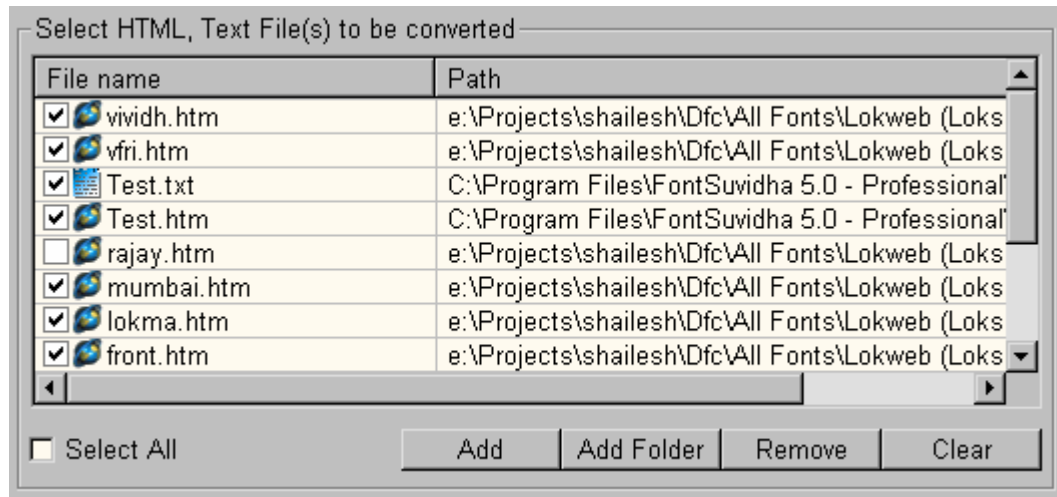
All the menus are same as previous. You select source font family and destination font from the list.

In this converter you convert as many files as you want at a time. This was not possible in previous versions.

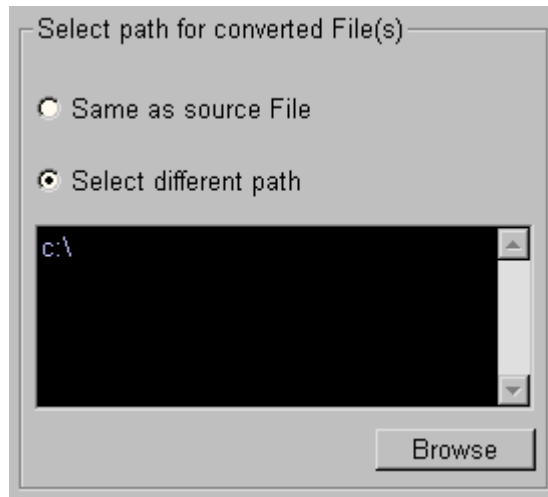


You can add single or multiple, HTML or text files in the list and that will get converted at a single click.

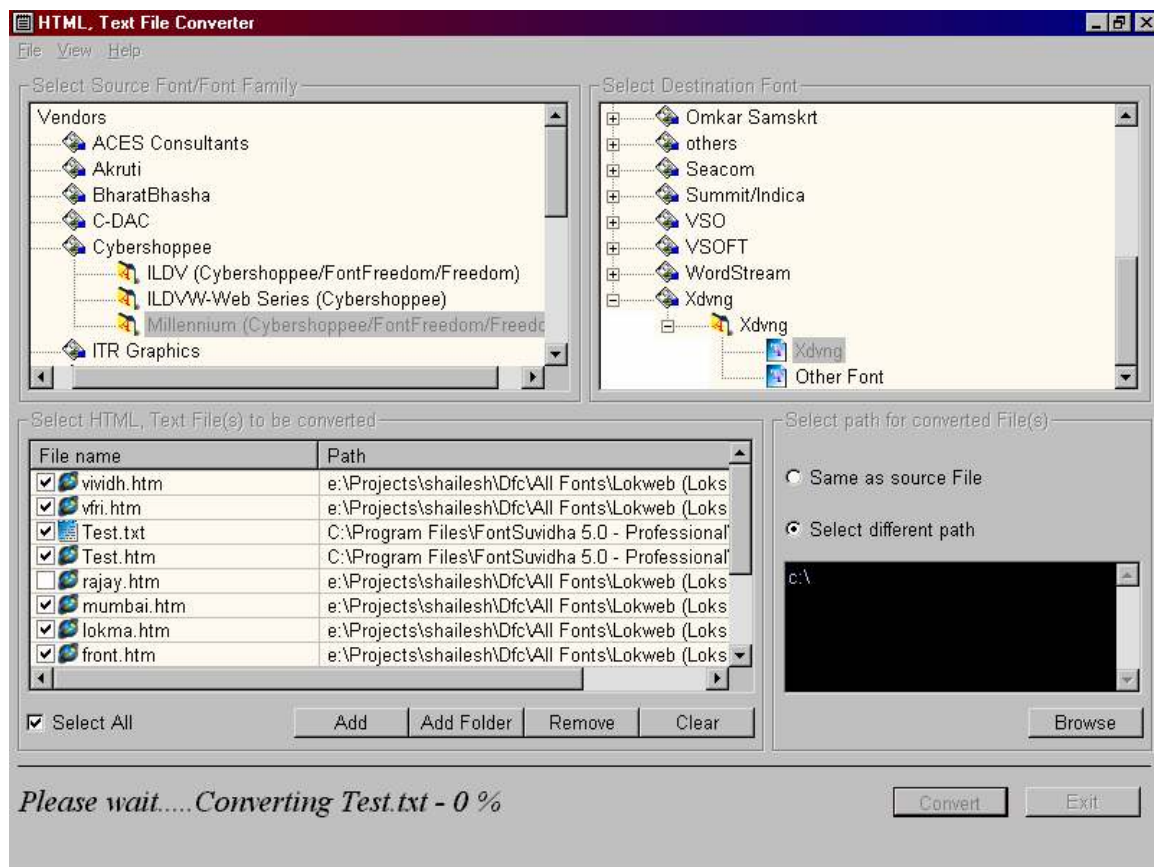
Using '**Add**' button you can add single file. Using '**Add Folder**' you can add files from a folder. After you add desired files in the list you can select one or more or all files for conversion. Also you can remove file from the list and clear whole list as well.



When you convert those files you can either have converted files to be in same directory or you can specify the path.



After selecting files and selecting appropriate path you can press '**Convert**' button. During conversion you will see the progress.

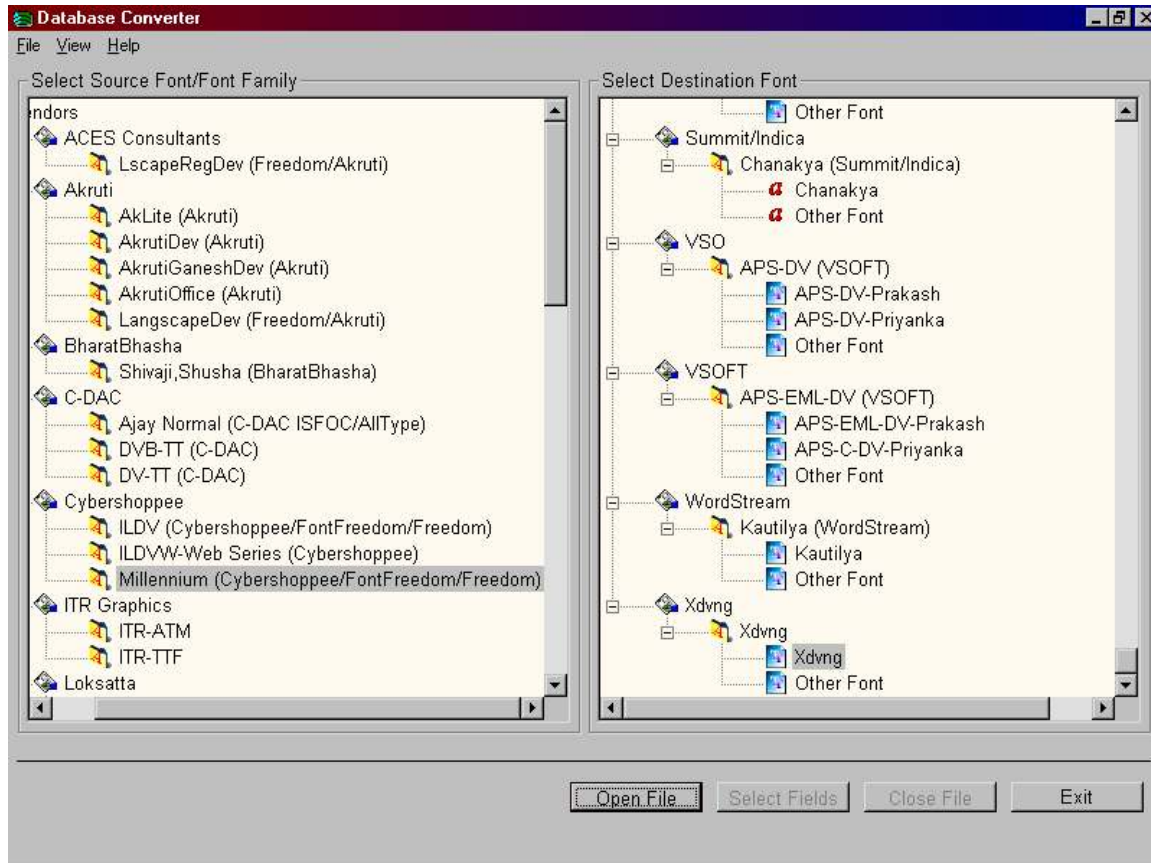


Note: If some characters which are not supported by the destination font family are present in the source file then those characters will be replaced by boxes or *. Read more about this in the section [Non-compatibility issues and their effect on conversion](#).

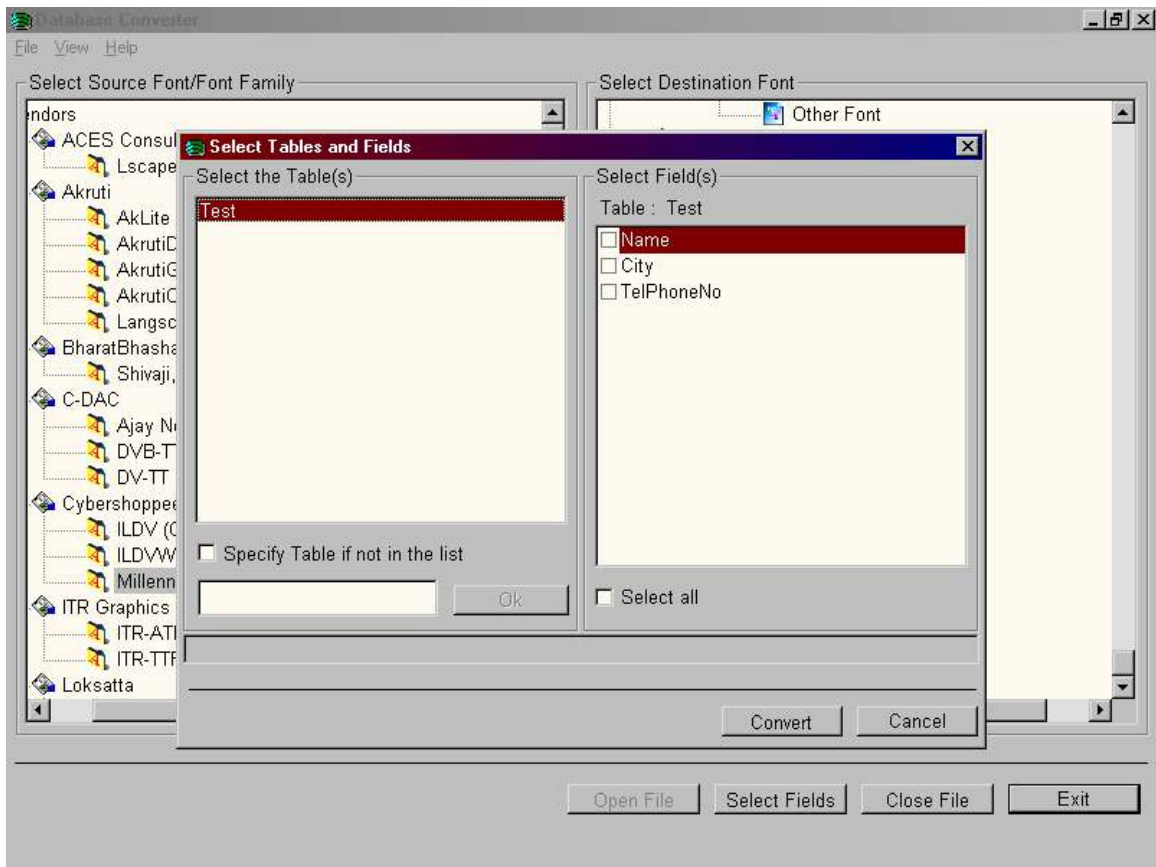
[TOP](#)

- **Access (.mdb), FoxPro, Dbase (.DBF) File Converter**
(This converter module has limitations on certain new operating systems like Windows Vista and Windows 7. Please check the readme.txt file included in the distribution kit to know more about this and the possible remedies)

This converter allows you to convert the data in **.mdb** and **.dbf** files.



Make the appropriate selection of source font family and destination font. You then open **.mdb** or **.dbf** file using **'Open File'** button that you want to convert.



You will then get another dialog which will contain the information about **'.mdb'** or **'.dbf'** file. It contains the list of tables in the database file. On selecting table from the list you will see the list of fields in that table. You can select one or more or all fields from the list. Then you can press **'Convert'** button. At a time conversion can be done on only one table. Also if the table is not there in the list then you can specify table exclusively. After conversion is done you can go to previous window by clicking **'Cancel'**. You can close file using **'Close File'** button. If you wish to select some other table then again you can press **'Select Fields'** button.

Note: If some characters which are not supported by the destination font family are present in the source file then those characters will be replaced by boxes or *. Read more about this in the section [Non-compatibility issues and their effect on conversion](#).

[TOP](#)

- **Converter For MS-Excel**

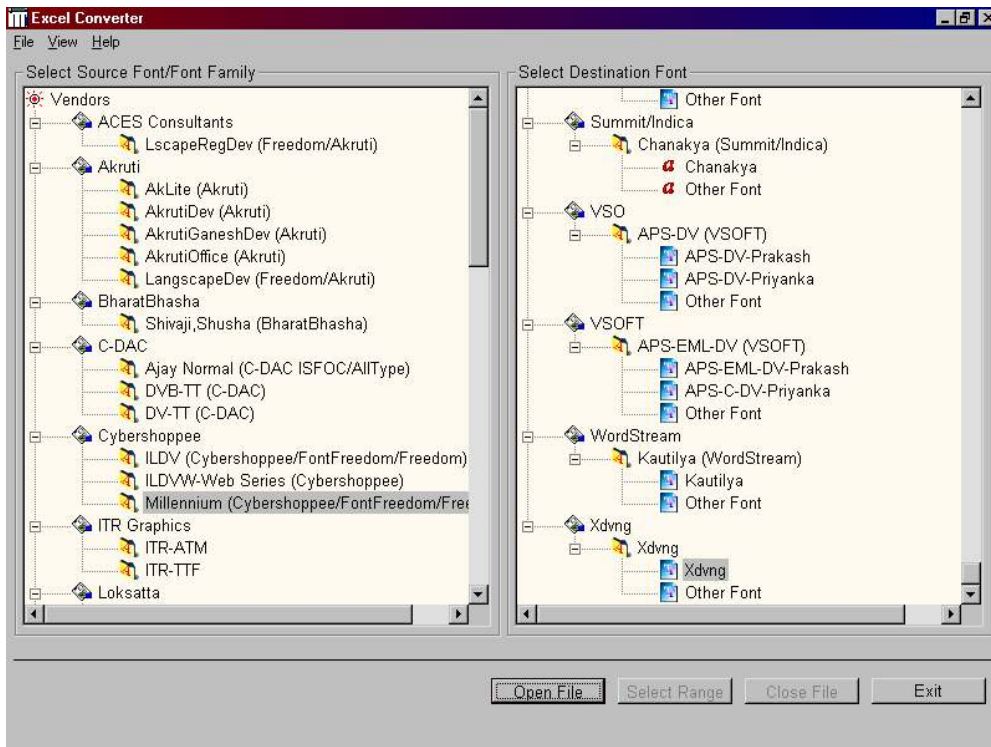
(This converter module has limitations on certain new operating systems like Windows Vista and Windows 7. Please check the readme.txt file included in the distribution kit to know more about this and the possible remedies)

This module is for converting the MS Excel documents from within MS Excel only. There are two converters for MS-Excel.

- **MS-Excel Converter:** In this case user needs to select the range of cells, which he wants to convert. Then he needs to run '**MS-Excel Converter**' and select the source font family and destination font. After that when he clicks on convert button, selected text will get converted to destination font.
- **MS-Excel Direct Converter:** This is just like changing your font from Arial to Times New Roman. This is a quick module, enabling you to convert the selected range of cells without going through the steps as mentioned above. All you need to do here is, just run the '**MS-Excel Direct Converter**' once. Then just change the Font in the Font Window of MS Excel and that's all. The entire proceedings are then taken over by the program and the conversion is done for you.

User can run these converters from '**Start Program**' menu.

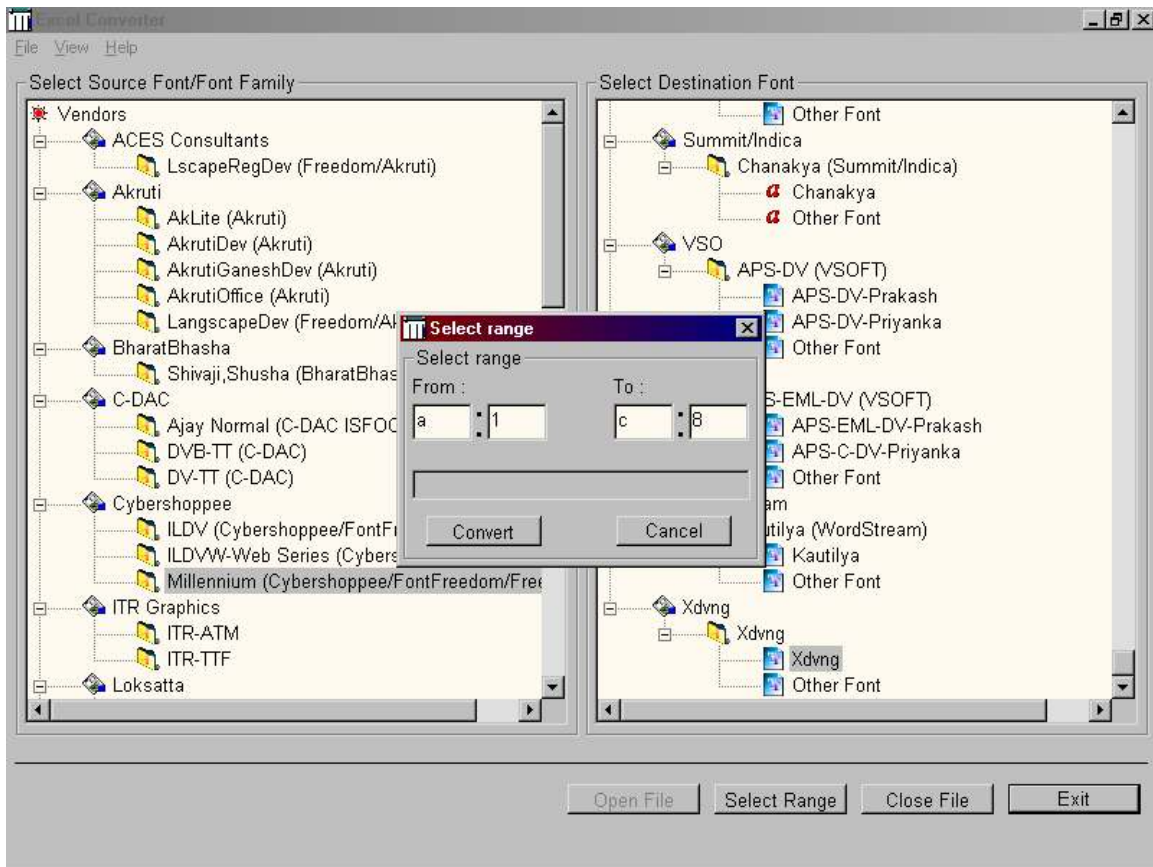
- **MS-Excel Converter**



All the menus are same as previous. You select source font family and destination font from the list. Then you can open the file using 'Open File' button. Specified file will get opened and you will be asked to enter the range, which you want to convert.

The screenshot shows a Microsoft Excel spreadsheet with the following data:

	A	B	C	D
1	सचिन तेंडुलकर	ठाणे	६६६६६६६	
2	विनोद कांबळी	कांजुरमार्ग	४४४४४४४	
3	धनराज पिल्ले	दादर	७७७७७७७	
4	महम्मद अझरुद्दीन	गांधीनगर	५५५५५५५	
5	विजय अमृतराज	डोंबिवली	४४४४४४४	
6	जवागल श्रीनाथ	भांडुप	९९९९९९९	
7	अनिल कुंबळे	प्रभादेवी	७७७७७७७	
8	अजित आगरकर	वरळी	३३३३३३३	
9				
10				
11				



Once you specify the range you can press '**Convert**' button. Conversion will be done.

	A	B	C	D
1	सचिन तेंडुलकर	ठाणे	६६६६६६६	
2	बिनोद कांबळी	कांजुरमार्ग	४४४४४४४	
3	धनराज पिल्ले	दादर	८८८८८८८	
4	महम्मद अझरुद्दीन	गांधीनगर	५५५५५५५	
5	विजय अमृतराज	डोंबिवली	४४४४४४४	
6	जबागल श्रीनाथ	भाडुप	१११११११	
7	अनिल कुंबळे	प्रभादेवी	८८८८८८८८	
8	अजित आगरकर	वरळी	३३३३३३३	
9				
10				
11				

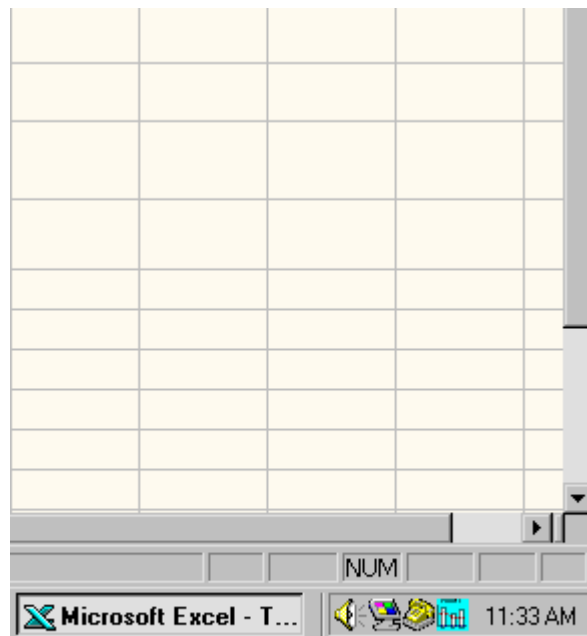
Note: If some characters which are not supported by the destination font family are present in the source file then those characters will be replaced by boxes or *. Read more about this in the section [Non-compatibility issues and their effect on conversion](#).

[TOP](#)

- **MS-Excel Direct Converter**

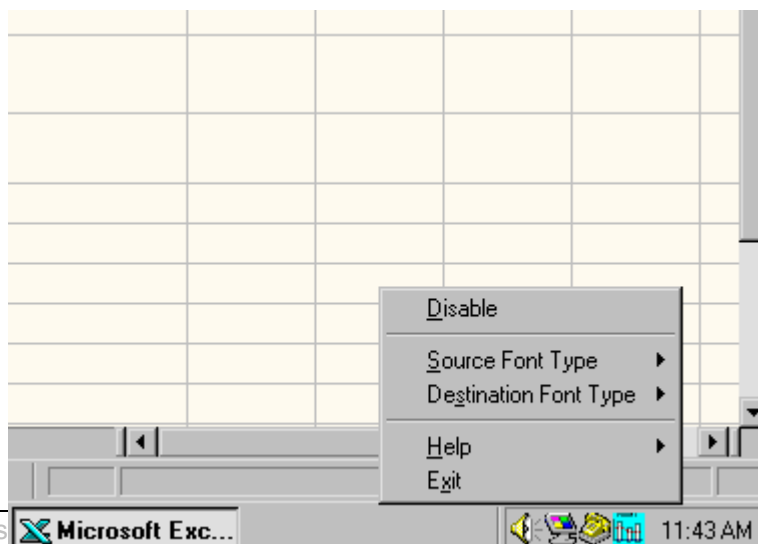
(This converter module has limitations on certain new operating systems like Windows Vista and Windows 7. Please check the readme.txt file included in the distribution kit to know more about this and the possible remedies)

You can start this converter from '**Start Program**' menu. You will be asked to specify the File that you want to convert. Specified file will be opened in **MS-Excel** and you will see the icon of '**MS-Excel Direct Converter**' in the system tray in right bottom corner on task bar.



MS-Excel Direct Converter

If you click on that icon you will get the following menus.



All these menus are already explained in '**MS-Word Direct Converter**'. Once this converter is started when you change the font of selected text conversion will take place.

Note: If some characters which are not supported by the destination font family are present in the source file then those characters will be replaced by boxes or *. Read more about this in the section [Non-compatibility issues and their effect on conversion](#).

[TOP](#)

Test File

We have included a set of DOC, Excel, mdb, Text & HTML files named Test.Doc, Test.xls, Test.mdb, Test.txt & Test.html, which are demo files for the software. These files contain text composed in three different fonts, namely 'MillenniumPriya', 'XDevnagari' and 'Shivaji05'. You can test the conversion program on these files. The files are available at the location where you have installed the software. The related fonts are available on the CD. If you do not have these fonts installed on your system, you can do so now, by copying these font files & pasting them in the **Windows\fonts** directory on your system.

We are sure, you will find this software of much use in handling your daily working needs. Thousands of DTP users & home users have always felt the need of such a utility, which has come into a reality now. If you have any other fonts that you feel should be included in this software, please get in touch with us.

[TOP](#)

Non-compatibility issues and their effect on conversion

Due to some of the non-compatibility issues discussed above, there could be some effects on the conversion through **FontSuvudha**. There are a few fonts, where some of the characters are not existing at all. In such cases, if such fonts are selected as destination fonts, 'square boxes' or 'star sign' will replace the characters not available in the destination font. The users will have to then type these characters manually. It may be noted that we have absolutely no control over this issue. An example of this is here.

XDvng is a Sanskrit Font. It makes use of 'Dand' character. In Sanskrit font, there is nothing like a 'comma' character. Thus, if you are converting text from some other font to XDvng, and the text contains 'comma', it will be replaced with a 'square box', since 'comma' is not available in XDvng font.

In another family, Moser Database, there have been variations in the fonts within the same family. Here also, we can not do anything except displaying a note for you as soon as the conversion is over.

This is true with some other fonts also. Although it is impossible to cater to this problem from within FontSuvudha, we are popping up a note as soon as conversion process is over if such thing happens during conversion process. This gives you an alert so that you can check the document for such missing characters.

[TOP](#)

Development Team

This software is a product of almost 8 months of R&D, application development and hard work by many programmers at IL Infotech Pvt. Ltd. The team members are,

Ninad Pradhan, Shailesh Deodhar, Shridhar Malagi, Deepak Mali, Sanjay Jain, Aditya Deshpande, Vaibhav Dhandarphale.

[TOP](#)

FontSuvudha 6.0 - Professional

The revolutionary Software, breaking the barriers of Devnagari Font Conversion!

For Trade Enquiry, Contact:

CyberShoppee

Chanakya, 3rd Floor, Gokhale Road, Naupada,

Thane 400602, Maharashtra, India

Tel No: 91-22-5421185 / 91-22-5339003

E-mail: support@cybershoppee.com

Web: www.cybershoppee.com / www.fontsuvudha.com

Note: The Copyrights of the software and font names in this document are properties of respective manufacturers.

Font Families Included in FontSuidha

There are a number of **FONT FAMILIES** in use. We have tried to pick some important families of these for the first phase.

The following is a list of the fonts included in **FontSuidha** 6.0. There are many more fonts coming in, along with new families in our later versions. As said earlier, it was practically NOT possible for us to include all the Font Names. We had to restrict ourselves to few font names. Thus, there could be many Font Names missing from the list below. However, the conversion very much takes place.

1. Ajay Normal (C-DAC ISFOC/AllType)

Ajay Normal

2. AkLite (Akruti)

AkLiteHansa
AkLitePriya
AkLiteShruti
AkLiteYogini

3. AkrutiDev (Akruti)

AkrutiDevAbhijit
AkrutiDevAditi
AkrutiDevAditya
AkrutiDevAjit
AkrutiDevAkanksha
AkrutiDevAkankshaMedium
AkrutiDevAkhila
AkrutiDevAkshardhara
AkrutiDevAkshardharaExtBold
AkrutiDevAkshay
AkrutiDevAnand
AkrutiDevAnil
AkrutiDevAnjali
AkrutiDevArjun
AkrutiDevAshvin
AkrutiDevAsmita
AkrutiDevBela
AkrutiDevBhagya
AkrutiDevBharani
AkrutiDevBharati
AkrutiDevBhaskar
AkrutiDevBrahma
AkrutiDevCactus
AkrutiDevChakra
AkrutiDevChakraNormal
AkrutiDevChampa
AkrutiDevChandrika
AkrutiDevCharu
AkrutiDevDeepa
AkrutiDevGanesh
AkrutiDevHansa
AkrutiDevHarsha

AkrutiDevHarshaMedium
AkrutiDevHema
AkrutiDevIndu
AkrutiDevIshwar
AkrutiDevJanhavi
AkrutiDevKailas
AkrutiDevKailasMedium
AkrutiDevKalidas
AkrutiDevKusum
AkrutiDevMadhura
AkrutiDevMalavika
AkrutiDevMallika
AkrutiDevMandara
AkrutiDevMangal
AkrutiDevManisha
AkrutiDevManoj
AkrutiDevManorama
AkrutiDevMaya
AkrutiDevMeera
AkrutiDevMegha
AkrutiDevMenaka
AkrutiDevMitra
AkrutiDevMogara
AkrutiDevMogaraMedium
AkrutiDevMouj
AkrutiDevMoujLight
AkrutiDevMukund
AkrutiDevNandi
AkrutiDevNarmada
AkrutiDevNartaki
AkrutiDevNatraj
AkrutiDevNatrajLight
AkrutiDevNavaneet
AkrutiDevNavin
AkrutiDevNewPriya
AkrutiDevNewPriyaExpand
AkrutiDevNewPriyaNormal
AkrutiDevOmkar
AkrutiDevParimala
AkrutiDevPataliputra
AkrutiDevPayal
AkrutiDevPooja
AkrutiDevPrakash
AkrutiDevPratap
AkrutiDevPratik
AkrutiDevPraveen
AkrutiDevPreeti
AkrutiDevPreetiLight
AkrutiDevPrema
AkrutiDevPriya
AkrutiDevPriyaExpanded
AkrutiDevPriyanka
AkrutiDevPushpa

AkrutiDevRahul
AkrutiDevRaksha
AkrutiDevRakshaExtBold
AkrutiDevRekha
AkrutiDevRishi
AkrutiDevRohini
AkrutiDevRoshan
AkrutiDevSavita
AkrutiDevSeetha
AkrutiDevShantala
AkrutiDevShivaji
AkrutiDevShradda
AkrutiDevShridhar
AkrutiDevShridharLight
AkrutiDevShruti
AkrutiDevSindhu
AkrutiDevSita
AkrutiDevSneha
AkrutiDevSulekh
AkrutiDevSunil
AkrutiDevSushma
AkrutiDevSwati
AkrutiDevTilak
AkrutiDevTriveni
AkrutiDevUpendra
AkrutiDevVaishali
AkrutiDevValmiki
AkrutiDevVandana
AkrutiDevVarsha
AkrutiDevVarun
AkrutiDevVedik
AkrutiDevVichitra
AkrutiDevVidya
AkrutiDevVijay
AkrutiDevVinod
AkrutiDevVivek
AkrutiDevYamuna
AkrutiDevYogini

4. AkrutiGaneshDev (Akruti)

AkrutiGaneshDev
AkrutiGaneshDevAkanksha
AkrutiGaneshDevPriya
AkrutiGaneshDevPriyaExpand
AkrutiGaneshDevShridhar
AkrutiGaneshDevShruti
AkrutiGaneshDevYogini

5. AkrutiOffice (Akruti)

AkrutiOfficeAditi
AkrutiOfficeAjit
AkrutiOfficeAkanksha
AkrutiOfficeAkansha

AkrutiOfficeAkshardhara
AkrutiOfficeAkshay
AkrutiOfficeChakra
AkrutiOfficeChampa
AkrutiOfficeDeepa
AkrutiOfficeHansa
AkrutiOfficeHinPriya
AkrutiOfficeManorama
AkrutiOfficeMogara
AkrutiOfficeMouj
AkrutiOfficePriya
AkrutiOfficePriyaExpand
AkrutiOfficeShruti
AkrutiOfficeSulekh
AkrutiOfficeSwati
AkrutiOfficeTriveni
AkrutiOfficeVijay
AkrutiOfficeYogini
AkrutiOfficeYoginiLight
AkrutiOfficeYogini-S

6. Aman,Ankit,Agra (Moser Database)

Agra
Ajay Normal
Richa
Krishna
Krishna Shatter
Ankit
Aman
Arjun
Hemant
Liza
Pankaj

7. Amar Ujala

AU

8. APS-DV (VSOFT)

APS-DV-Prakash
APS-DV-Priyanka

9. APS-EML-DV (VSOFT)

APS-EML-DV-Prakash
APS-C-DV-Priyanka

10. Bhartiya Hindi

BHARTIYA HINDI_228

11. Bhaskar

Bhaskar

12. Chanakya (Summit/Indica)

Chanakya

13. DVB-TT (C-DAC)

DVB-TTDhruv
DVB-TTDhruvEN
DVB-TTGanesh
DVB-TTGaneshEN
DVB-TTRaghav
DVB-TTRaghavEN
DVB-TTShridhar
DVB-TTShridharEN
DVB-TTSurekh
DVB-TTSurekhEN
DVB-TTYogesh
DVB-TTYogeshEN

14. DVBW-TT (C-DAC)

DVBW-TTSurekh

15. DVONIL (Sulipi)

DVONIL-BOLD
DVONIL-LIGHT

16. DV-TT (C-DAC)

DV-TTAakash
DV-TTGanesh
DV-TTGaneshEN
DV-TTManohar
DV-TTMayur
DV-TTNatraj
DV-TTRadhika
DV-TTSurekh
DV-TTSurekhEN
DV-TTVasundhara
DV-TTYogesh
DV-TTYogeshEN

17. Gul

Gul-9Bold

18. ILDV (Cybershoppee/FontFreedom/Freedom)

ILDV101
ILDV102
ILDV103
ILDV104
ILDV105
ILDV106
ILDV107
ILDV108
ILDV109
ILDV110
ILDV111
ILDV112
ILDV113

ILDV114
ILDV115
ILDV116
ILDV117
ILDV118
ILDV119
ILDV120
ILDV121
ILDV122
ILDV123
ILDV124
ILDV125
ILDV126
ILDV127
ILDV128
ILDV129
ILDV130

19. ILDVW-Web Series (Cybershoppee)

ILDVW501
ILDVW502
ILDVW503

20. Indian Script Code For Information Interchange (ISCII)

21. ITR-ATM

ITRShridhar
ITRPudhari
ITRSanjay
Dev SanjayE ITR

22. ITRFK-Dev (ITR/Modular/Shree Lipi)

ITRFK-DevAnant
ITRFK-DevChaitanya
ITRFK-DevLaxman
ITRFK-DevLaxmanB
ITRFK-DevLaxmanE

23. ITR-TTF

ITRShridhar
ITRPudhari
ITRSanjay
Dev SanjayE ITR

24. Jagran

Jagran

25. Kautilya (WordStream)

Kautilya

26. Kiran, Amruta, Aarti Fonts

Kiran
Amruta

Aarti

27. Kruti Dev Series (More Services)

Kruti Dev 011
Kruti Dev 012
Kruti Dev 013
Kruti Dev 014
Kruti Dev 016
Kruti Dev 021
Kruti Dev 022
Kruti Dev 024
Kruti Dev 100
Kruti Dev 101
Kruti Dev 102
Kruti Dev 103
Kruti Dev 104
Kruti Dev 105
Kruti Dev 106
Kruti Dev 110
Kruti Dev 111
Kruti Dev 112
Kruti Dev 114
Kruti Dev 115
Kruti Dev 116
Kruti Dev 120
Kruti Dev 121
Kruti Dev 122
Kruti Dev 123
Kruti Dev 124
Kruti Dev 125
Kruti Dev 126
Kruti Dev 130
Kruti Dev 252
DevLys 010
DevLys 140
DevLys 150
DevLys 160
DevLys 170
DevLys 180
DevLys 190

28. LangscapeDev (Freedom/Akruti)

LangscapeDevManorama
LangscapeDevPooja
LangscapeDevPriya

29. LokWeb (Loksatta Internet Edition)

LokWeb

30. LscapeRegDev (Freedom/Akruti)

LscapeRegDevManorama
LscapeRegDevPooja
LscapeRegDevPriya

31. Maha (Maharashtra Times)

Maha

32. Millennium (Cybershoppee/FontFreedom/Freedom)

MillenniumAmeya
MillenniumAtal
MillenniumDeepak
MillenniumGanesh
MillenniumGauri
MillenniumMogara
MillenniumNilima
MillenniumPooja
MillenniumPriya
MillenniumShailesh
MillenniumShridhar
MillenniumVarun

33. Mithi

HINmith0

34. Naidunia (Naidunia/Webdunia)

Naidunia
Webdunia

35. Narad

Narad

36. Sahara India

Sahara

37. Samskrt

Samskrt

38. Shivaji,Shusha (BharatBhasha)

Shivaji01
Shivaji02
Shivaji05
Shusha
Shusha05

39. SHREE708 (ShreeLipi-ATM-Version 2.0/3.0)

SHREE708

40. SHREE709 (ShreeLipi-ATM)

SHREE709

41. SHREE709 (ShreeLipi-ATM-Version 2.0/3.0)

SHREE708
SHREE709

42. SHREE714 (ShreeLipi-ATM)

SHREE700

SHREE708
SHREE714
SHREE738

43. SHREE733 (ShreeLipi-ATM-Version 2.0/3.0)

SHREE708
SHREE709
SHREE733
SHREE979

44. Shree-Dev (ShreeLipi-TTF-Version 5.0/Ankur)

Shree-Dev-001
Shree-Dev-002
SHREE-DEV-0726-S00
SHREE-DEV-0726-S01
SHREE-DEV-0726-S02
SHREE-DEV-0726-S03
SHREE-DEV-0726-S04
SHREE-DEV-0726-S05
SHREE-DEV-1005-S00
SHREE-DEV-1005-S01
SHREE-DEV-1005-S02
SHREE-DEV-1005-S03
Shree-Dev-0708

45. ShreeDev Series (ShreeLipi-TTF-Version 3.0)

ShreeDev001
ShreeDev002
SHREE701
SHREE703
SHREE706
SHREE708
SHREE710
SHREE711
SHREE713
SHREE714
SHREE717
SHREE723
SHREE725
SHREE726
SHREE727
SHREE729
SHREE730
SHREE732
SHREE733
SHREE735
SHREE736
SHREE741
SHREE742
SHREE746
SHREE960
SHREE966

46. SUBAK (Sakal News Paper)

SUBAK
MUKUND
SUHAS

47. Sudipto (Maharashtra Times)

Sudipto

48. Umesh Fonts

Umesh

49. UNI Fonts

UNI-Bold

50. UNICODE Fonts (Mangal, Arial Unicode MS)

Mangal
aksDeva
Arial Unicode MS

51. Xdvng

Xdvng

52. Yogeshweb

Yogeshweb

53. NCHindi

NCHindi

54. Express

Express

55. DVDivyae

DVDivyae

56. AkrutiDevWebRbi

AkrutiDevWebRbi

[TOP](#)

Document Version: 20 August 2011

Contact Us

FontSuvidha 6.0 - Professional

The revolutionary Software, breaking the barriers of Devnagari Font Conversion!

For Trade Enquiry, Contact:

CyberShoppee.com

Chanakya, 3rd Floor, Gokhale Road, Naupada,

Thane 400602, Maharashtra, India

Tel No: 91-22-5421185 / 91-22-5339003

E-mail: support@cybershoppee.com

Web: www.cybershoppee.com / www.fontsuvidha.com

Note: The Copyrights of the software and font names in this document are properties of respective manufacturers.

[TOP](#)